

Building Information Modelling (BIM) Training

<https://ibse.hk/BIM-Training/>



3.1 Construction coordination



Ir Dr. Sam C. M. Hui

Department of Mechanical Engineering

The University of Hong Kong

E-mail: cmhui@hku.hk

Apr 2026

Contents



- Construction planning
- Virtual construction model
- Potential benefits
- BIM-based coordination
- Examples of coordination issues

Construction Project Management



Top 5 Challenges for Construction Project Managers

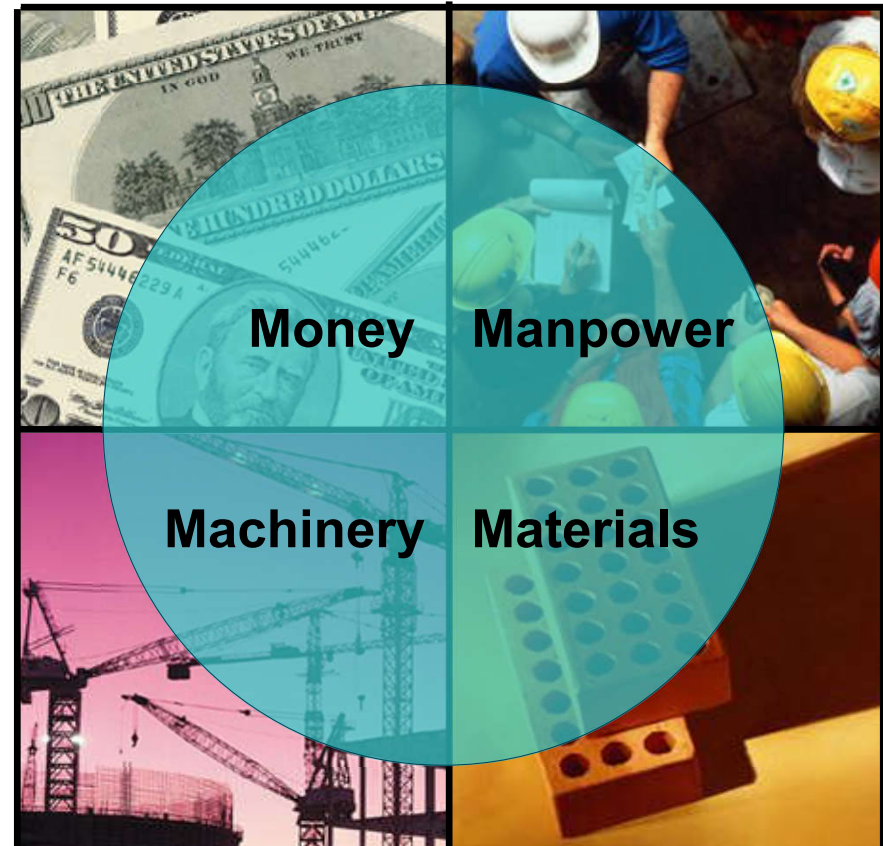
Problem Definition

- **Design**
 - No direct cost feedback on design decisions
 - Coordination of trades
- **Sub Contractor Cost**
 - Missing / Incorrect Design Information
 - Inability for reusing data for shop drawings
 - Field rework required for prefabricated components
 - Padding to compensate risks
 - Poor subcontractor work flow – “Starts and Stops”
 - Inadequate quantity information for planning
- **Construction**
 - Lack of owner trust – difficulties in communicating cost and schedule issues
 - Production control is based on subjective information
 - Frequent starts and stops
 - Estimating is time consuming and occasionally inaccurate
- **Facility Management**
 - Insufficient as-built project documentation
 - Renovation, addition and demolition planning is time consuming

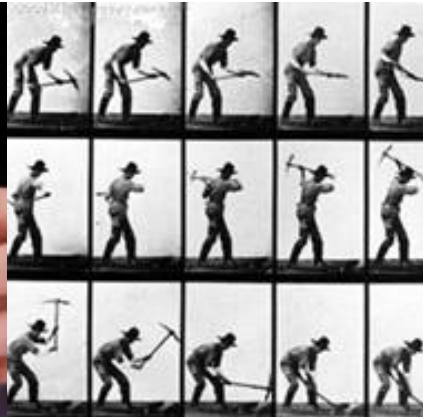
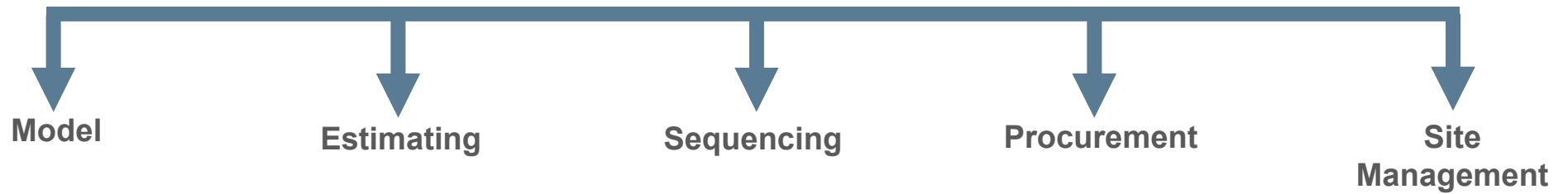
Objectives

- **Winning the bid**
 - Fast design feedback loop
 - Fast & accurate estimates
 - Value engineering
 - Constructability analysis

- **Managing the 4 Ms**
 - Money
 - Manpower
 - Machinery
 - Materials



Construction Planning



- Constructability Analysis
- Drives Estimating
- Provides Locations
- Zone Planning
- Design to Build / Build to Design

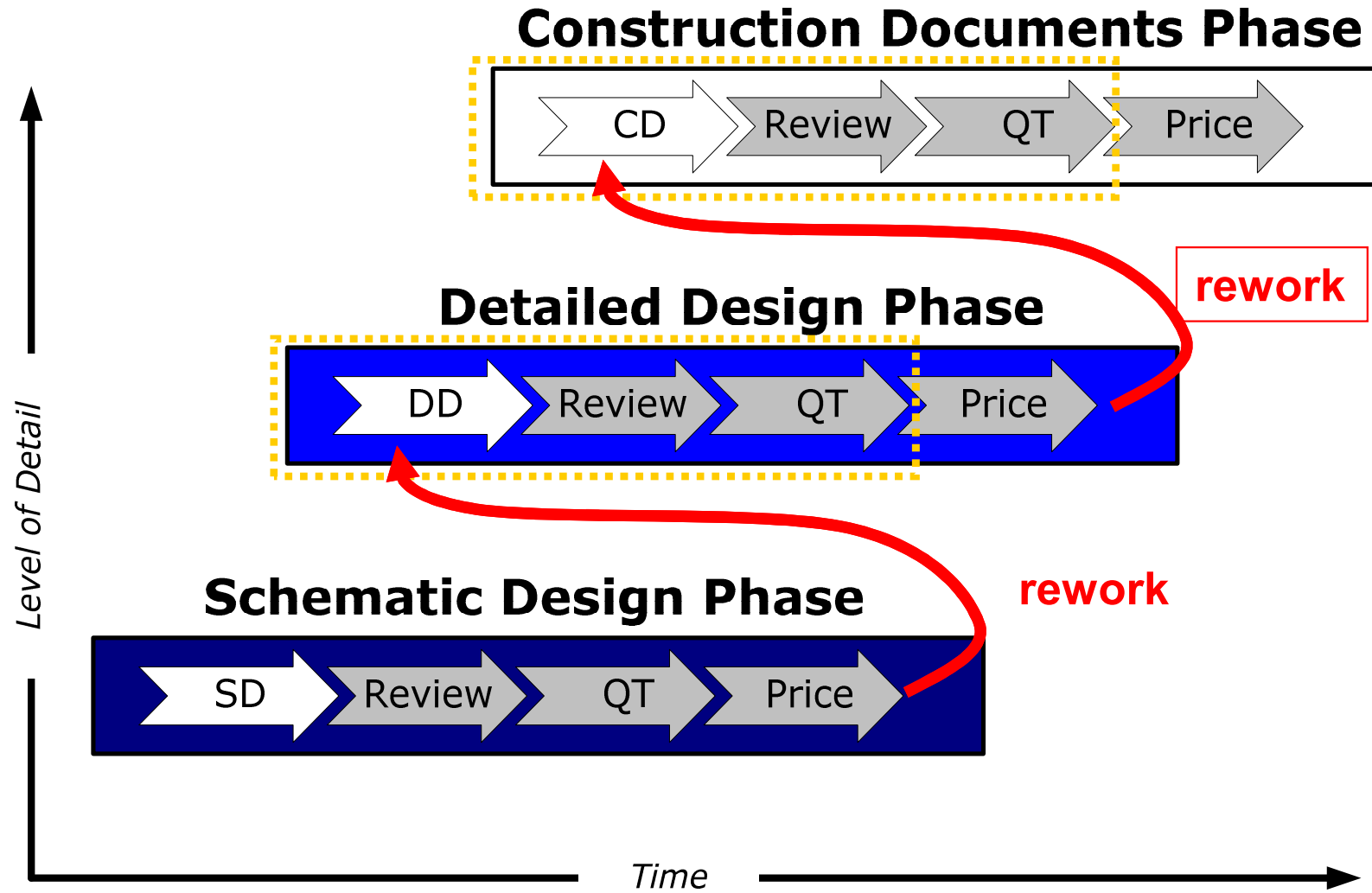
- Fast & Accurate
- Easy Updates – Linked
- Drives Sequencing

- Schedule Analysis
- Line of Balance
- Integrated Monte Carlo
- 4D Simulation
- Drives Procurement

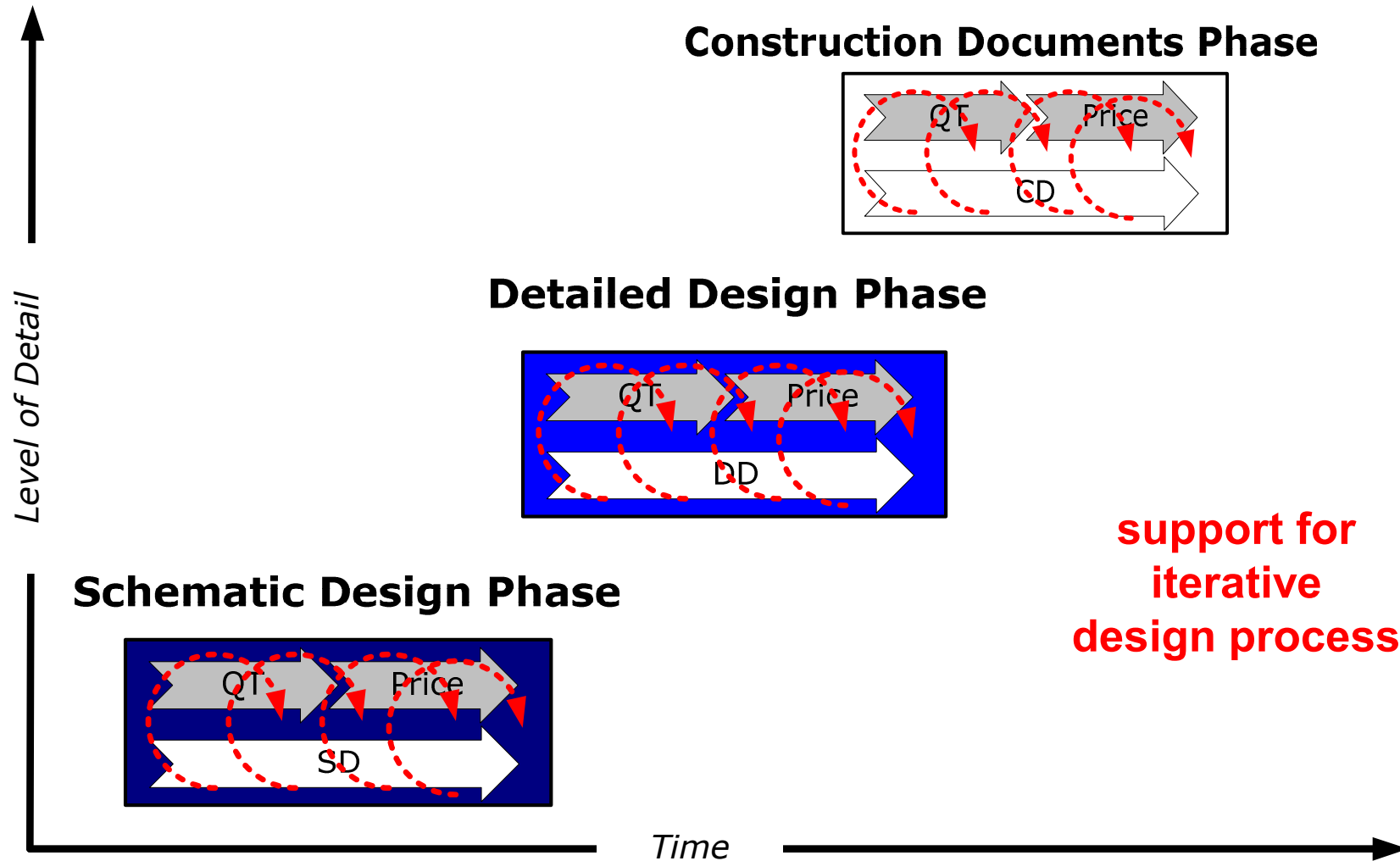
- Data Mining for Supplier Negotiations
- Tracking of High Risk, Long Lead Items
- Integrated with the Project Schedule
- Drives Site Management Process

- Short Lead Procurement
- Site Planning for Materials, Equipment & Locations

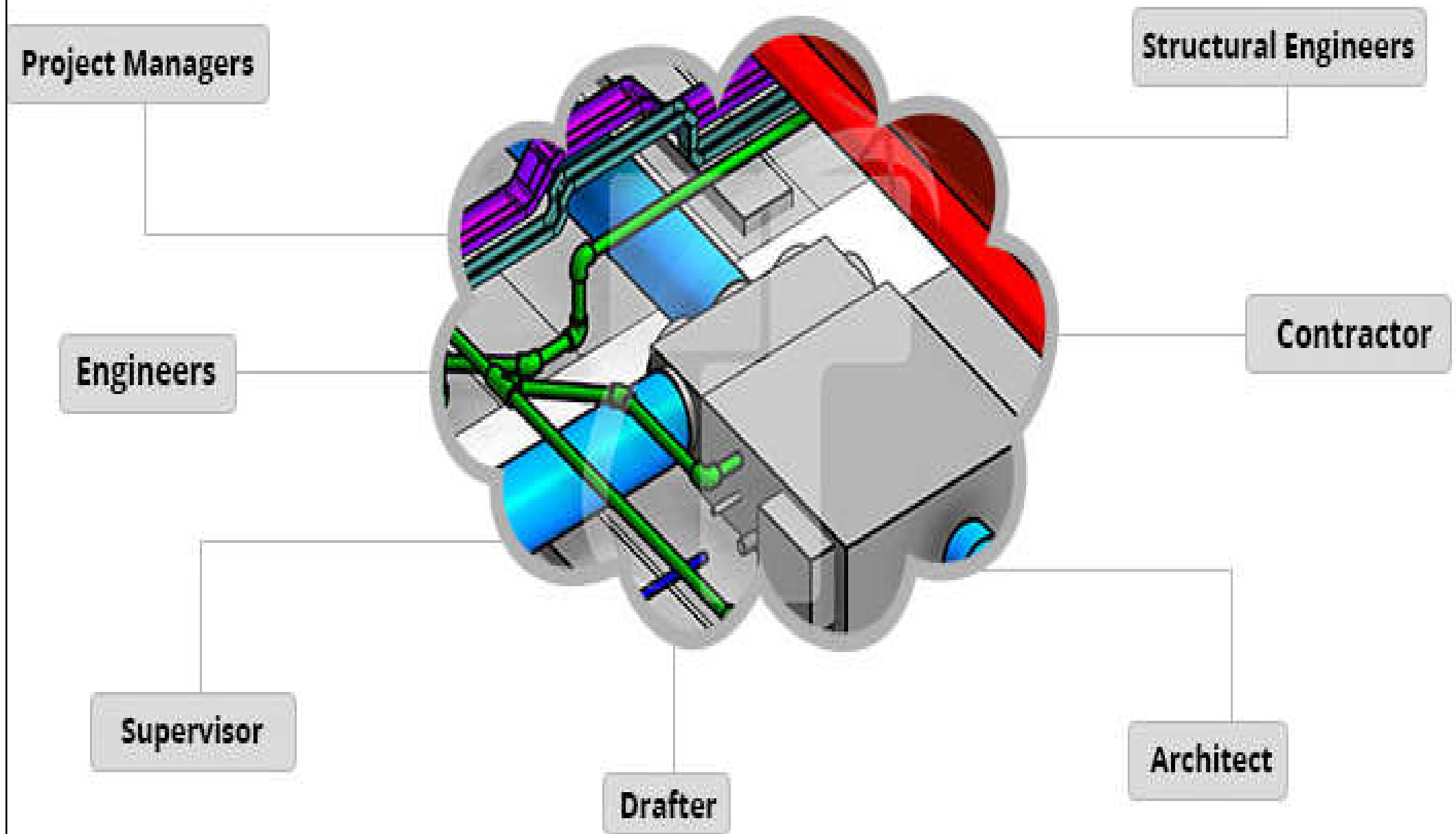
Traditional Design Process



New Design Process

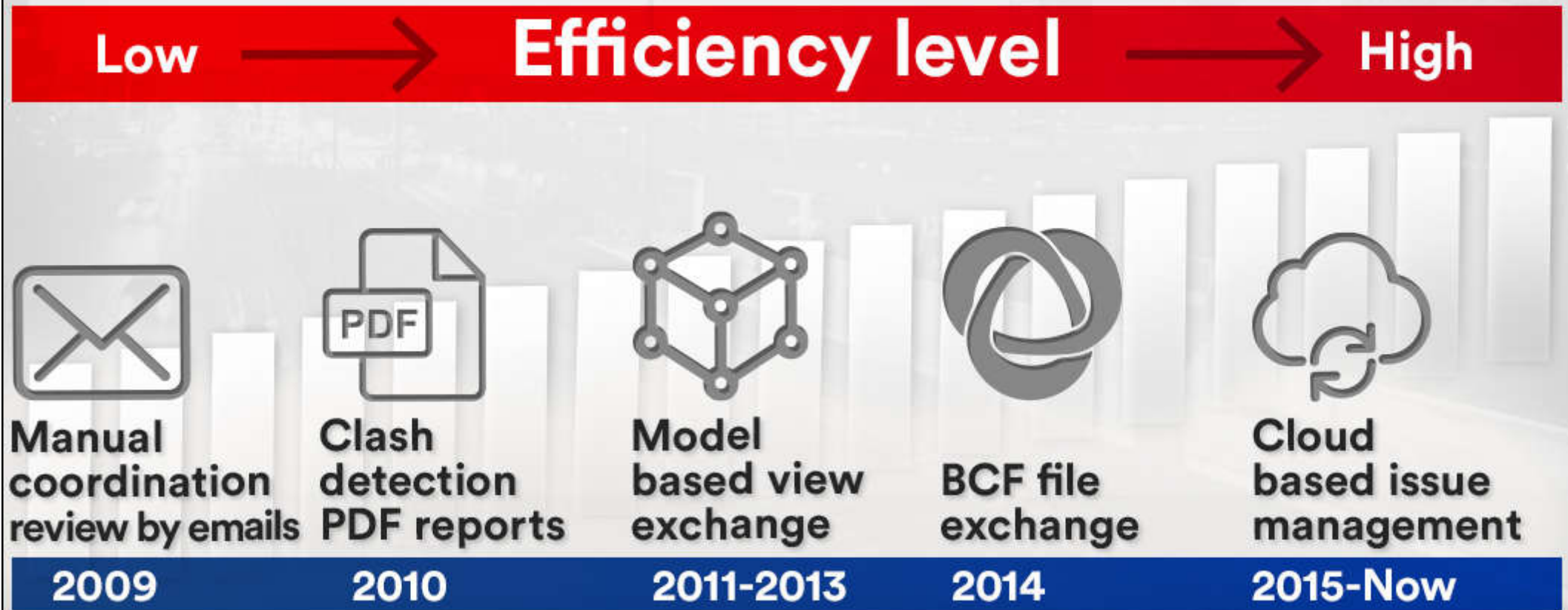


How does BIM enhance coordination on large projects?

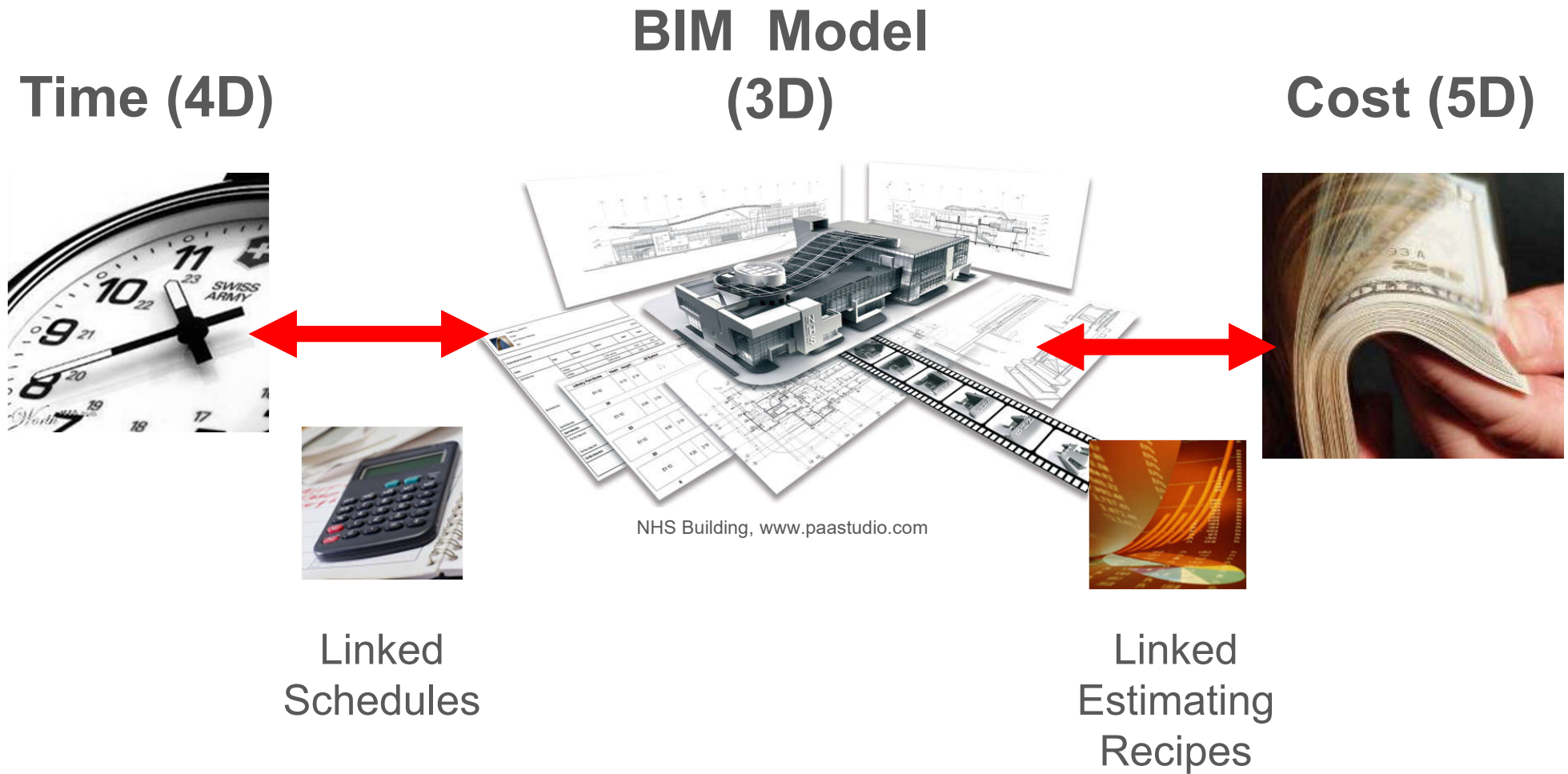


The evolution of BIM coordination

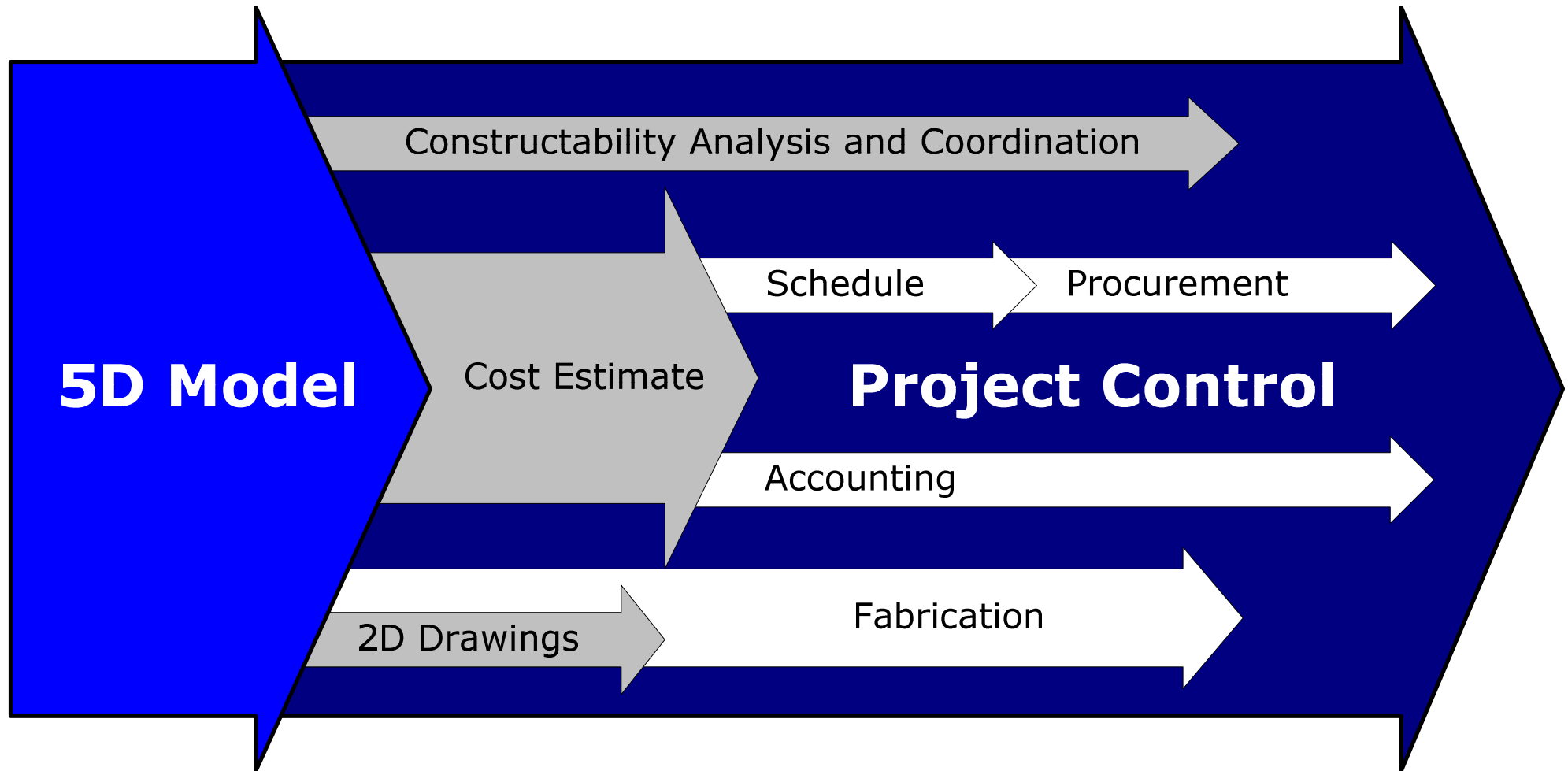
The Evolution of Digital Coordination



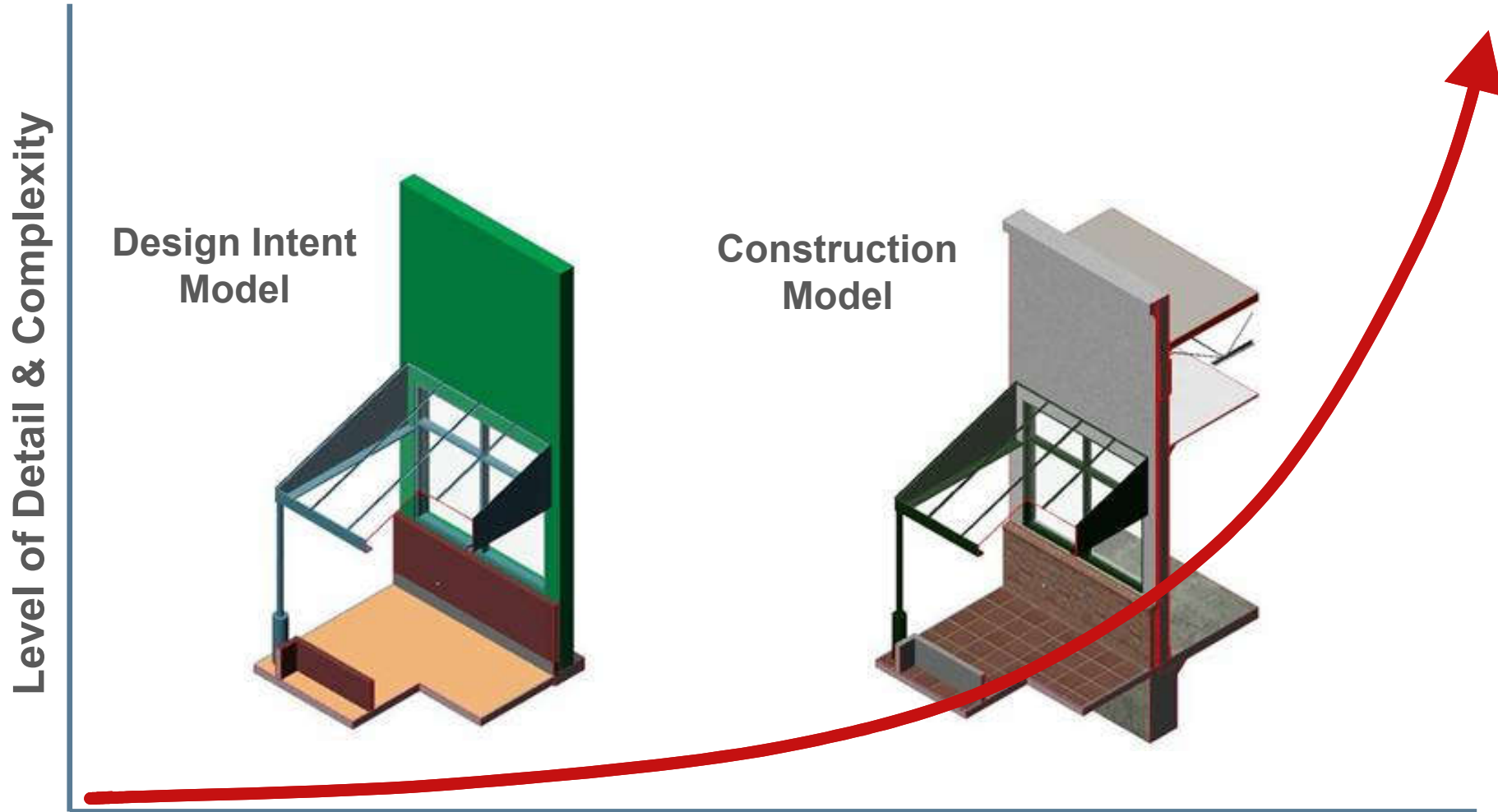
The Virtual Construction Model (5D)



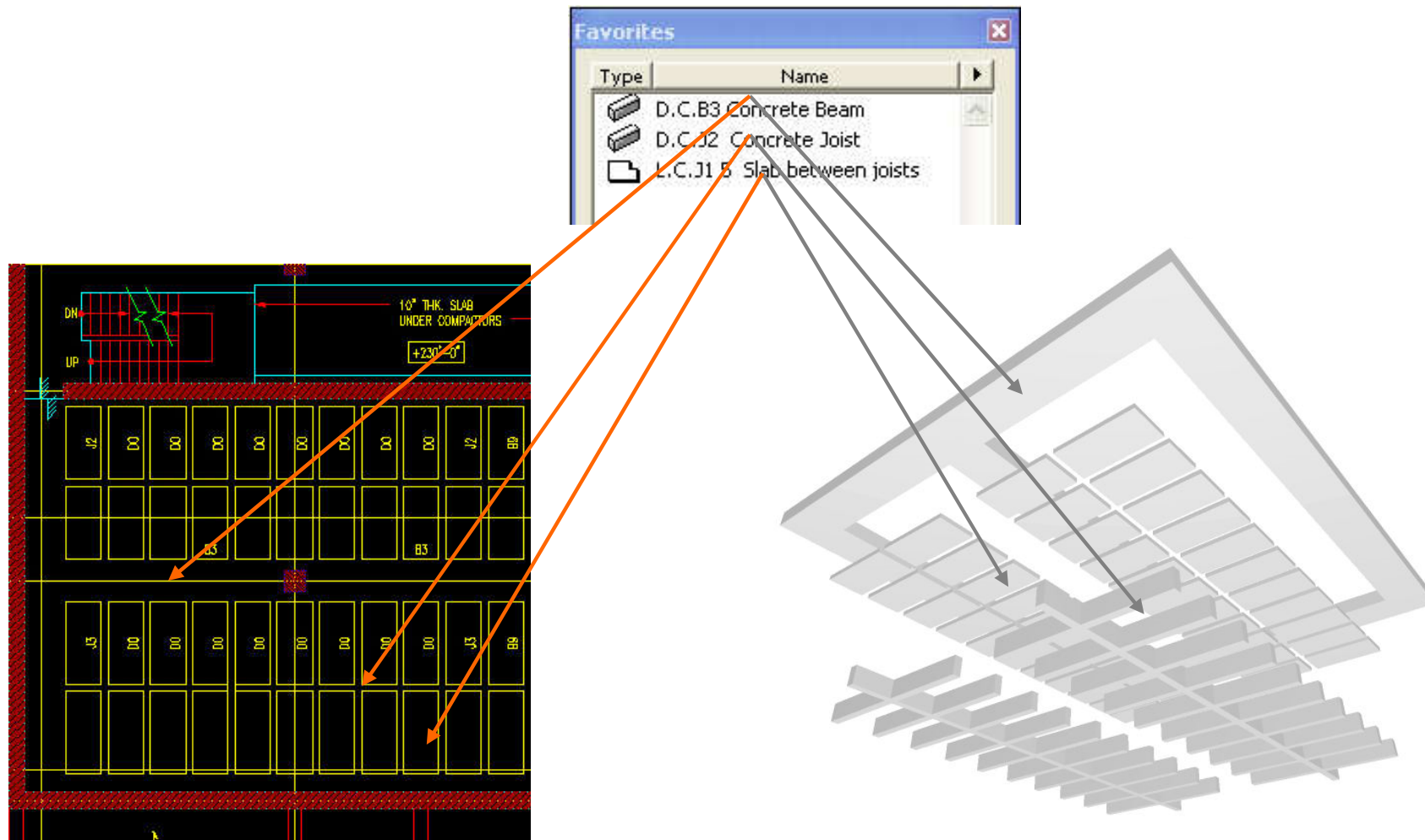
Work Flow



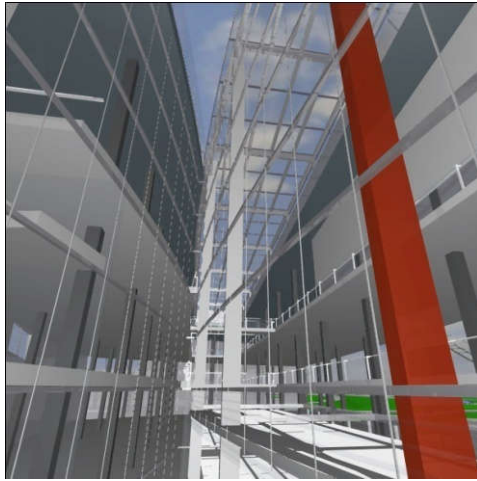
Construction Modelling



Construction Modelling



Recipe

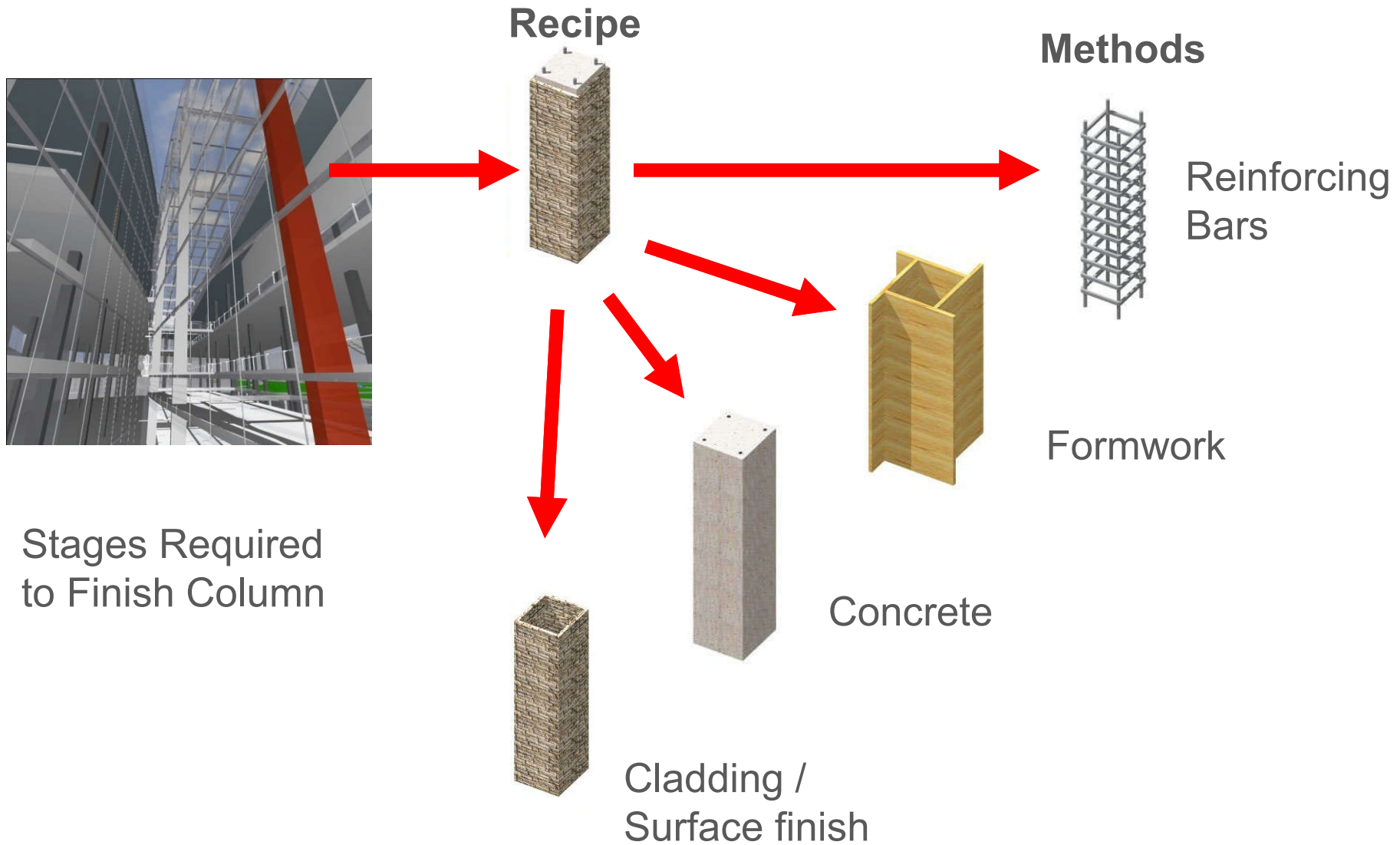


Recipe

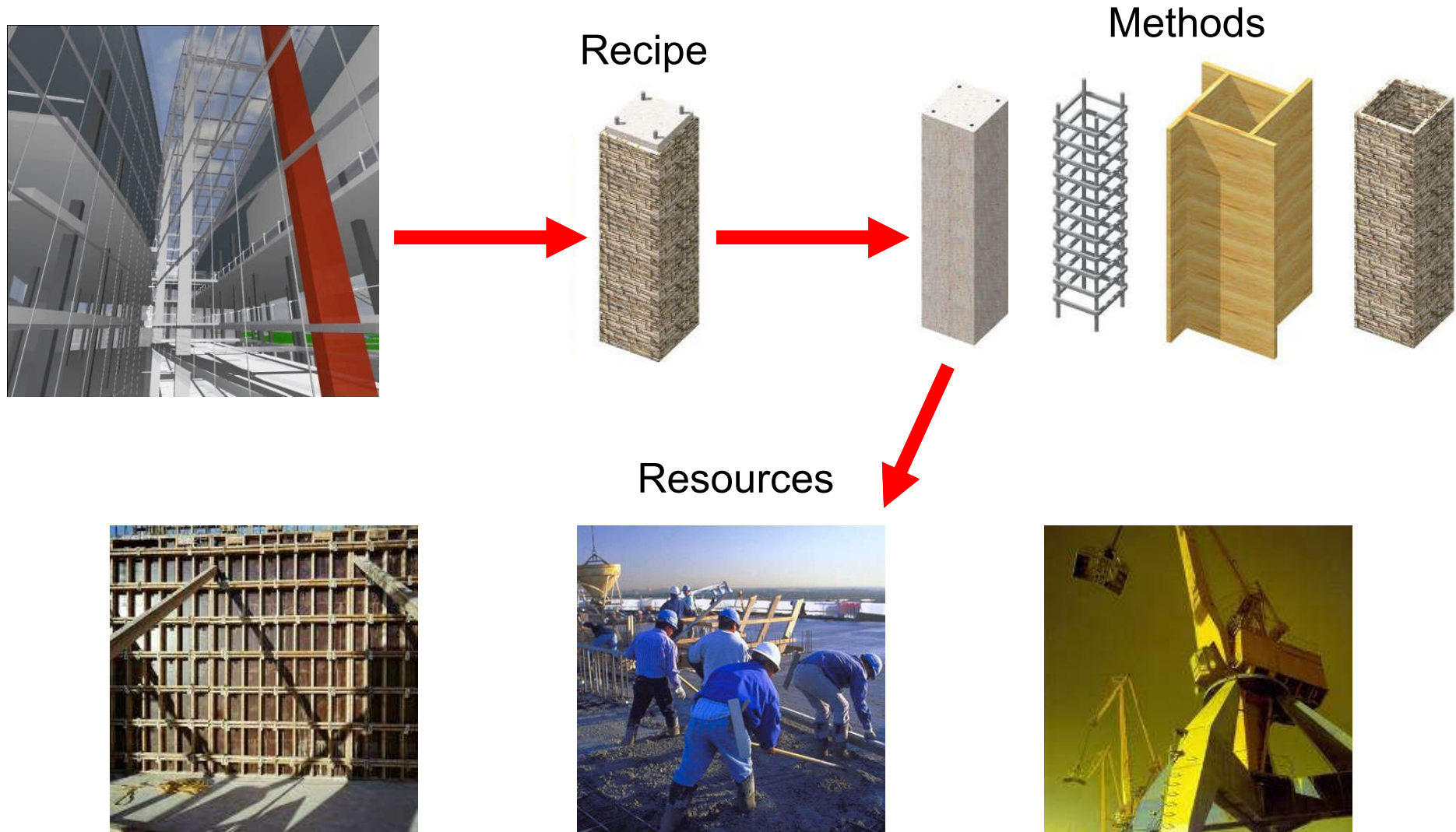


**Completed
Column**

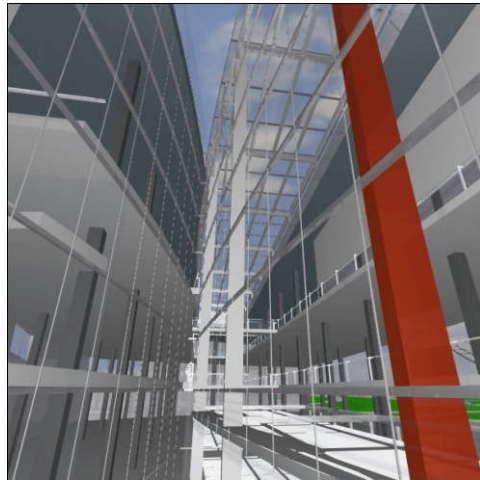
Methods



Resources



5D



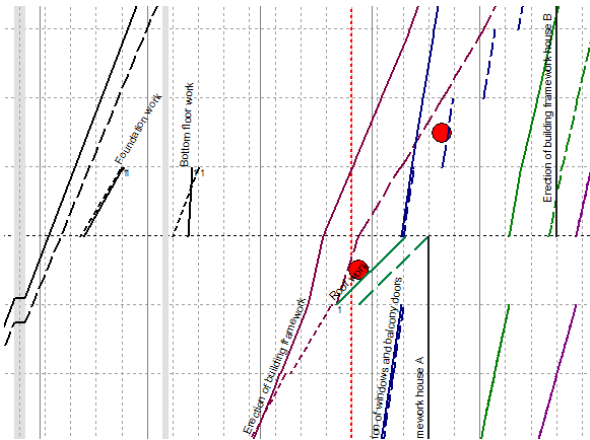
Recipe

Methods

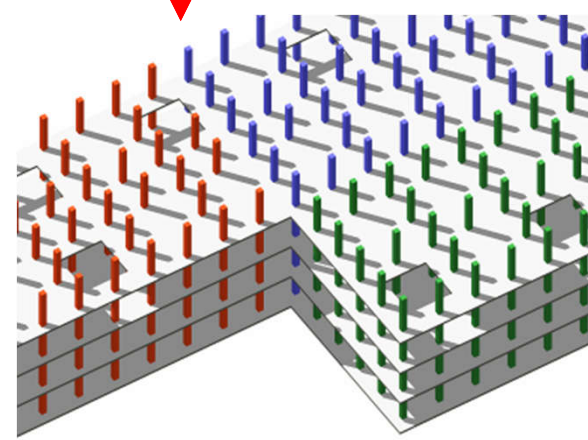
Resources



Zones/Floors

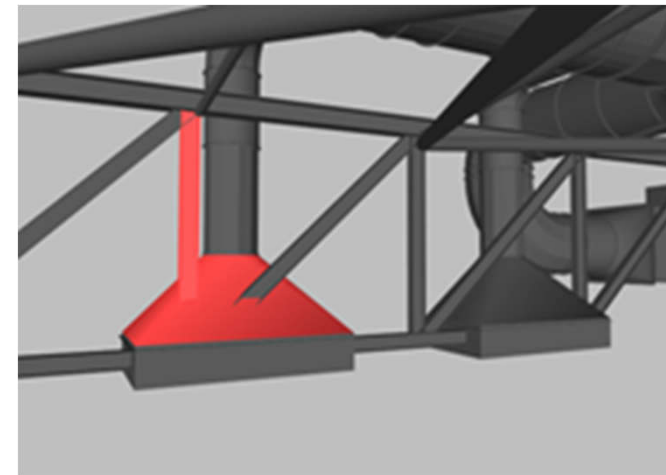
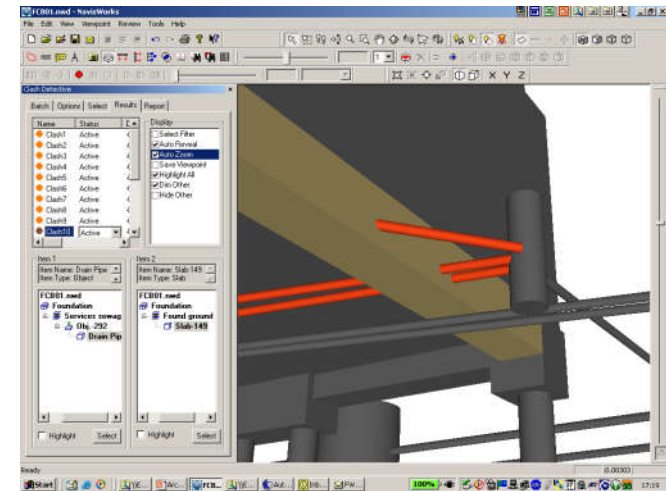


=



Benefits: Clash Detection

- Conventional methods of coordination are extremely time consuming and error-prone.
- Using internal or external clash detection software helps to identify the construction errors in the BIM model
- Construction risks and costs can be reduced significantly



(See also: Coordination and Clash Detection <http://www.vicosoftware.com/coordination-and-clash-detection>)

(Source: Graphisoft BIM Curriculum <http://www.graphisoft.com/learning/bim-curriculum/>)

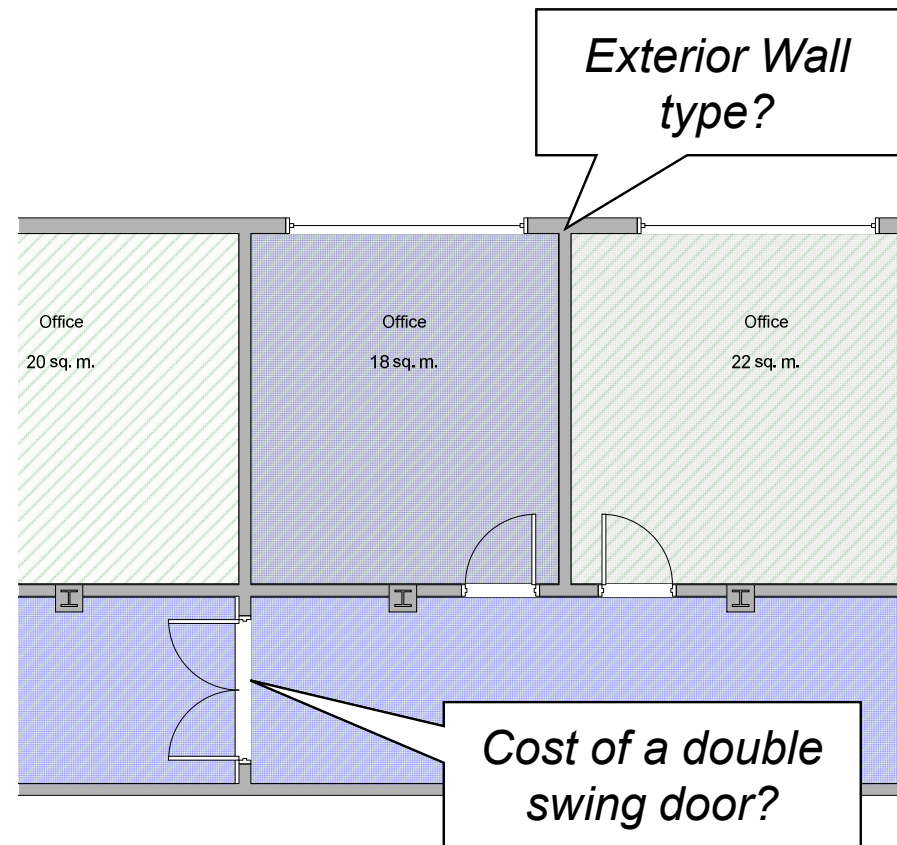
Benefits: Model-based Estimating

Early Design phases:

- Which materials?
- Price of materials?

Solution:

- Calculate cost ranges instead of fixed prices



(See also: Model-Based Estimating <http://www.vicosoftware.com/model-based-estimating>)

(Source: Graphisoft BIM Curriculum <http://www.graphisoft.com/learning/bim-curriculum/>)

Benefits: Vico Cost Planner

The screenshot displays the Vico Cost Planner software interface. The top section features a toolbar with various icons for navigation and editing. Below the toolbar, there are several panels on the left side, including 'Project', 'Cost Planner', 'Model Manager', 'Cost Planner', 'Bill Manager', 'Project Manager', and 'Reports'. The main workspace is divided into two primary areas: a network diagram on the left and a 3D model of a building on the right. The network diagram shows a flow of costs between different components, with nodes and connecting lines. The 3D model shows a multi-story building with a yellow base and blue upper sections. Below the 3D model, there is a detailed cost table with columns for Code, Description, Quantity, Consumption, Units, Amount, Unit, Cost/Unit, Price, Actual Price, and Variance.

Code	Description	Quantity	Consumption	Units	Amount	Unit	Cost/Unit	Price	Actual Price	Variance
0000	Item	1.00	1.00	none	1.00	ea	1000.00	1000.00	1000.00	0.00
0001	Foundations	2445.47	24.00	cu yd	2445.47	yd	40.00	10440.00	10440.00	0.00
0002	Superstructure	2445.47	22.00	cu yd	2445.47	yd	40.00	10440.00	10440.00	0.00
0003	Roofs	1.00	1.00	sq ft	1.00	sq	40.00	40.00	40.00	0.00
0004	Concrete Slabs	1.00	1.00	cu yd	1.00	yd	40.00	40.00	40.00	0.00
0005	Concrete Beams	1.00	1.00	cu yd	1.00	yd	40.00	40.00	40.00	0.00
0006	Concrete Columns	1.00	1.00	cu yd	1.00	yd	40.00	40.00	40.00	0.00
0007	Concrete Walls	1.00	1.00	cu yd	1.00	yd	40.00	40.00	40.00	0.00
0008	Concrete Labor	1.00	1.00	hr	1.00	hr	40.00	40.00	40.00	0.00
0009	Formwork	1.00	1.00	sq ft	1.00	sq	40.00	40.00	40.00	0.00
0010	Formwork Brackets	1.00	1.00	sq ft	1.00	sq	40.00	40.00	40.00	0.00
0011	Formwork Labor	1.00	1.00	hr	1.00	hr	40.00	40.00	40.00	0.00
0012	Formwork	1.00	1.00	sq ft	1.00	sq	40.00	40.00	40.00	0.00
0013	Formwork Brackets	1.00	1.00	sq ft	1.00	sq	40.00	40.00	40.00	0.00
0014	Formwork Labor	1.00	1.00	hr	1.00	hr	40.00	40.00	40.00	0.00
0015	Formwork	1.00	1.00	sq ft	1.00	sq	40.00	40.00	40.00	0.00
0016	Formwork Brackets	1.00	1.00	sq ft	1.00	sq	40.00	40.00	40.00	0.00
0017	Formwork Labor	1.00	1.00	hr	1.00	hr	40.00	40.00	40.00	0.00
0018	Formwork	1.00	1.00	sq ft	1.00	sq	40.00	40.00	40.00	0.00
0019	Formwork Brackets	1.00	1.00	sq ft	1.00	sq	40.00	40.00	40.00	0.00
0020	Formwork Labor	1.00	1.00	hr	1.00	hr	40.00	40.00	40.00	0.00
0021	Formwork	1.00	1.00	sq ft	1.00	sq	40.00	40.00	40.00	0.00
0022	Formwork Brackets	1.00	1.00	sq ft	1.00	sq	40.00	40.00	40.00	0.00
0023	Formwork Labor	1.00	1.00	hr	1.00	hr	40.00	40.00	40.00	0.00
0024	Formwork	1.00	1.00	sq ft	1.00	sq	40.00	40.00	40.00	0.00
0025	Formwork Brackets	1.00	1.00	sq ft	1.00	sq	40.00	40.00	40.00	0.00
0026	Formwork Labor	1.00	1.00	hr	1.00	hr	40.00	40.00	40.00	0.00
0027	Formwork	1.00	1.00	sq ft	1.00	sq	40.00	40.00	40.00	0.00
0028	Formwork Brackets	1.00	1.00	sq ft	1.00	sq	40.00	40.00	40.00	0.00
0029	Formwork Labor	1.00	1.00	hr	1.00	hr	40.00	40.00	40.00	0.00
0030	Formwork	1.00	1.00	sq ft	1.00	sq	40.00	40.00	40.00	0.00
0031	Formwork Brackets	1.00	1.00	sq ft	1.00	sq	40.00	40.00	40.00	0.00
0032	Formwork Labor	1.00	1.00	hr	1.00	hr	40.00	40.00	40.00	0.00
0033	Formwork	1.00	1.00	sq ft	1.00	sq	40.00	40.00	40.00	0.00
0034	Formwork Brackets	1.00	1.00	sq ft	1.00	sq	40.00	40.00	40.00	0.00
0035	Formwork Labor	1.00	1.00	hr	1.00	hr	40.00	40.00	40.00	0.00
0036	Formwork	1.00	1.00	sq ft	1.00	sq	40.00	40.00	40.00	0.00
0037	Formwork Brackets	1.00	1.00	sq ft	1.00	sq	40.00	40.00	40.00	0.00
0038	Formwork Labor	1.00	1.00	hr	1.00	hr	40.00	40.00	40.00	0.00
0039	Formwork	1.00	1.00	sq ft	1.00	sq	40.00	40.00	40.00	0.00
0040	Formwork Brackets	1.00	1.00	sq ft	1.00	sq	40.00	40.00	40.00	0.00
0041	Formwork Labor	1.00	1.00	hr	1.00	hr	40.00	40.00	40.00	0.00
0042	Formwork	1.00	1.00	sq ft	1.00	sq	40.00	40.00	40.00	0.00
0043	Formwork Brackets	1.00	1.00	sq ft	1.00	sq	40.00	40.00	40.00	0.00
0044	Formwork Labor	1.00	1.00	hr	1.00	hr	40.00	40.00	40.00	0.00
0045	Formwork	1.00	1.00	sq ft	1.00	sq	40.00	40.00	40.00	0.00
0046	Formwork Brackets	1.00	1.00	sq ft	1.00	sq	40.00	40.00	40.00	0.00
0047	Formwork Labor	1.00	1.00	hr	1.00	hr	40.00	40.00	40.00	0.00
0048	Formwork	1.00	1.00	sq ft	1.00	sq	40.00	40.00	40.00	0.00
0049	Formwork Brackets	1.00	1.00	sq ft	1.00	sq	40.00	40.00	40.00	0.00
0050	Formwork Labor	1.00	1.00	hr	1.00	hr	40.00	40.00	40.00	0.00
0051	Formwork	1.00	1.00	sq ft	1.00	sq	40.00	40.00	40.00	0.00
0052	Formwork Brackets	1.00	1.00	sq ft	1.00	sq	40.00	40.00	40.00	0.00
0053	Formwork Labor	1.00	1.00	hr	1.00	hr	40.00	40.00	40.00	0.00
0054	Formwork	1.00	1.00	sq ft	1.00	sq	40.00	40.00	40.00	0.00
0055	Formwork Brackets	1.00	1.00	sq ft	1.00	sq	40.00	40.00	40.00	0.00
0056	Formwork Labor	1.00	1.00	hr	1.00	hr	40.00	40.00	40.00	0.00
0057	Formwork	1.00	1.00	sq ft	1.00	sq	40.00	40.00	40.00	0.00
0058	Formwork Brackets	1.00	1.00	sq ft	1.00	sq	40.00	40.00	40.00	0.00
0059	Formwork Labor	1.00	1.00	hr	1.00	hr	40.00	40.00	40.00	0.00
0060	Formwork	1.00	1.00	sq ft	1.00	sq	40.00	40.00	40.00	0.00

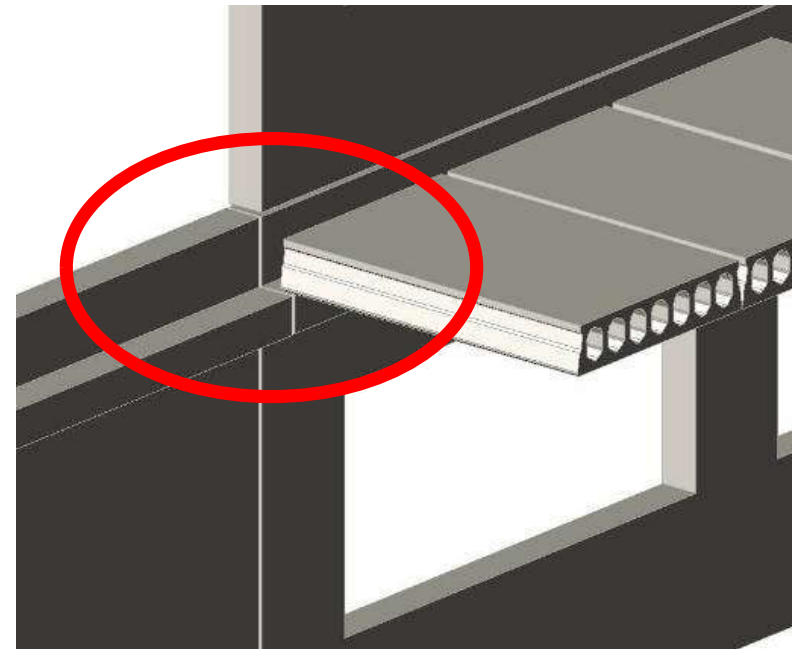
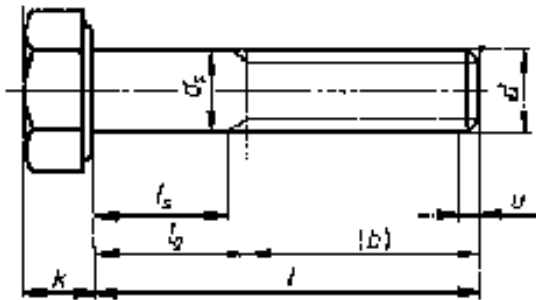
(See also: Cost Planning vs Estimating <http://www.vicosoftware.com/cost-planning-versus-estimating>)

(Source: Graphisoft BIM Curriculum <http://www.graphisoft.com/learning/bim-curriculum/>)

Benefits: Design to Build

Design follows construction methodology:

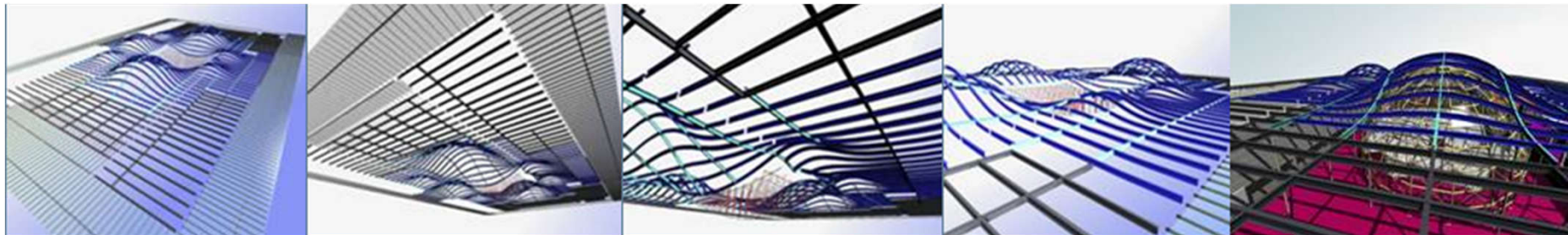
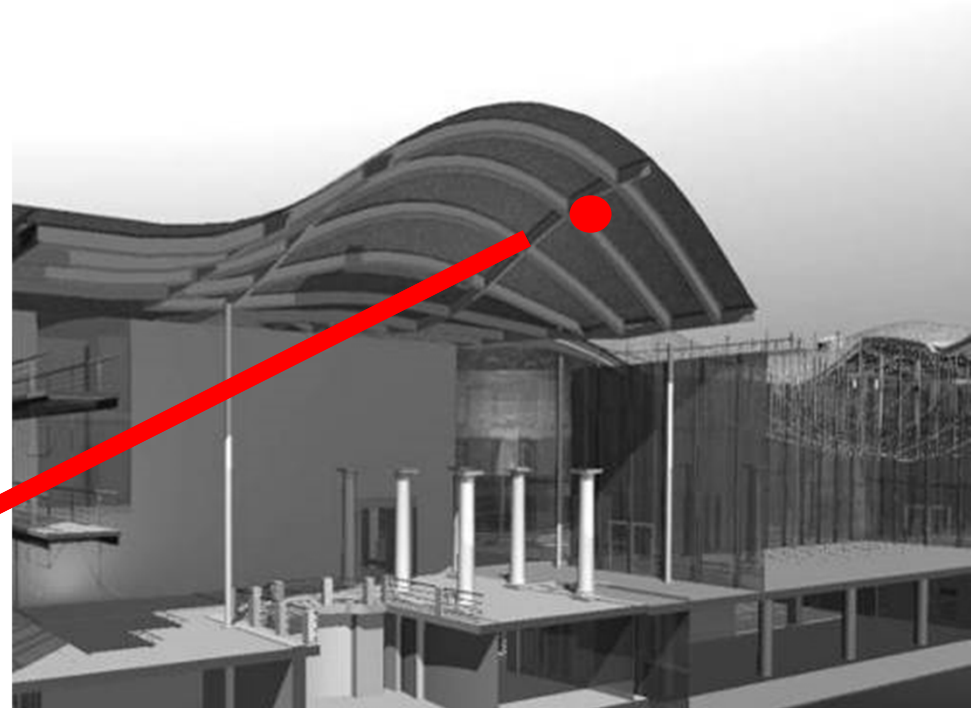
- Acceptable Tolerance
- Coordination of Trades
- Quality Check



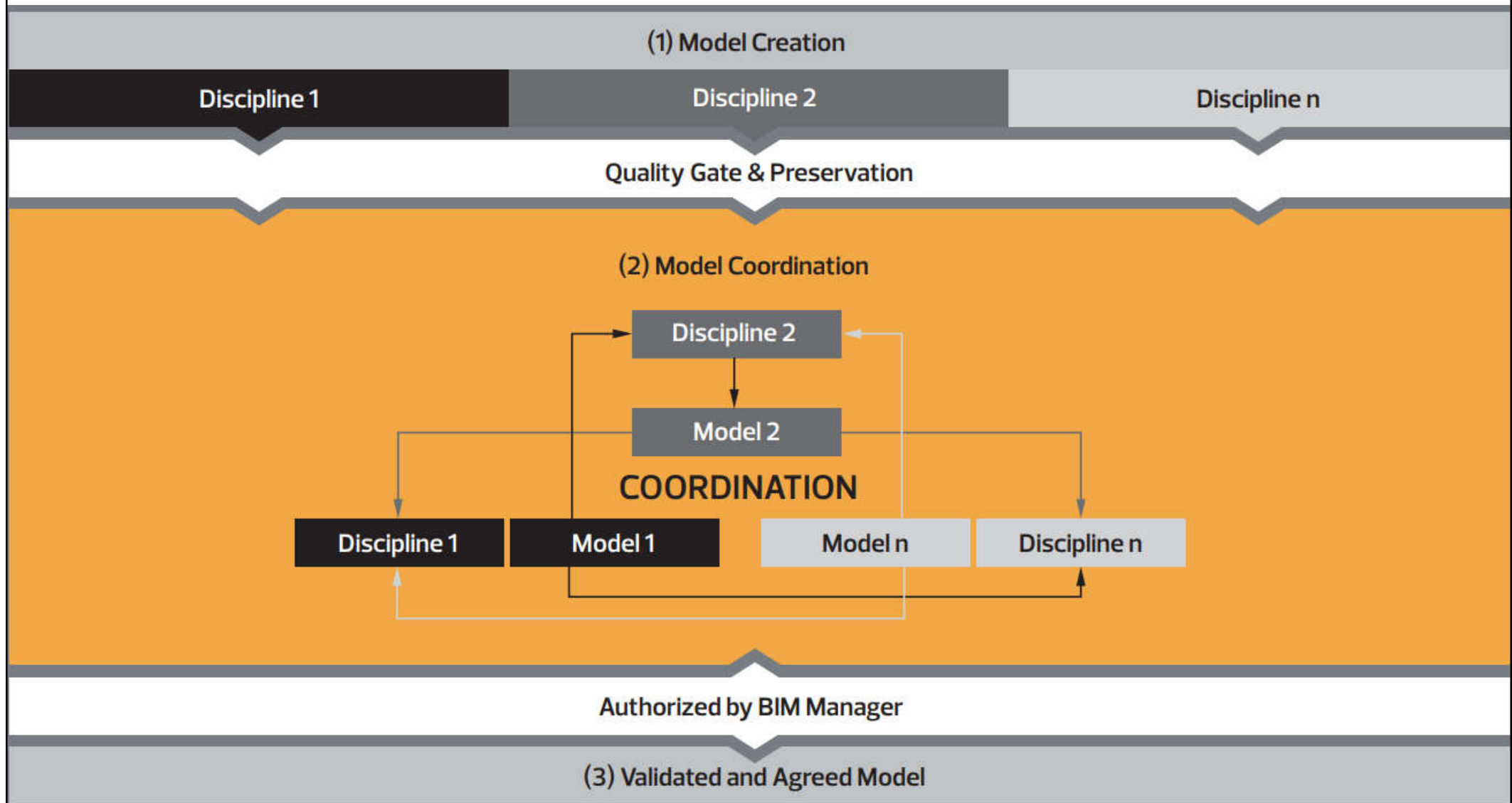
Benefits: Build to Design

- Measure points
- Check Onsite
- Guarantee Fit

X, Y, Z



Schematic BIM-based creation, coordination, and collaboration process



BIM-based coordination



- Model-based collaboration
 - With digital, structured building models
 - Discipline-oriented or Federation model approach
 - Every author, in accordance with their discipline, is responsible for their own digital model and shall have access for this model content only
 - Discipline model, submodel or technical model
 - With clear allocation of authors to individual discipline models, the components and changes can be organized clearly

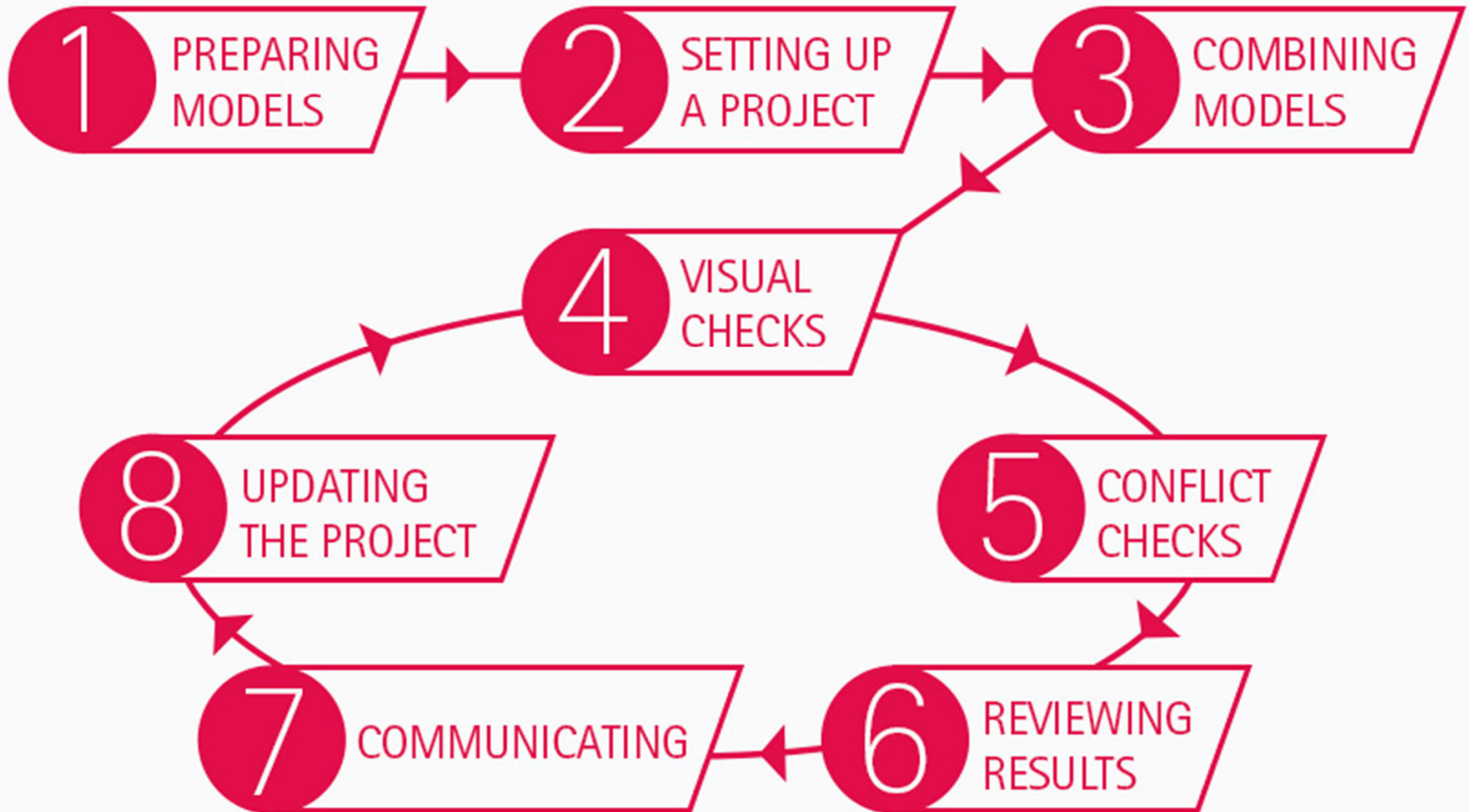
BIM-based coordination



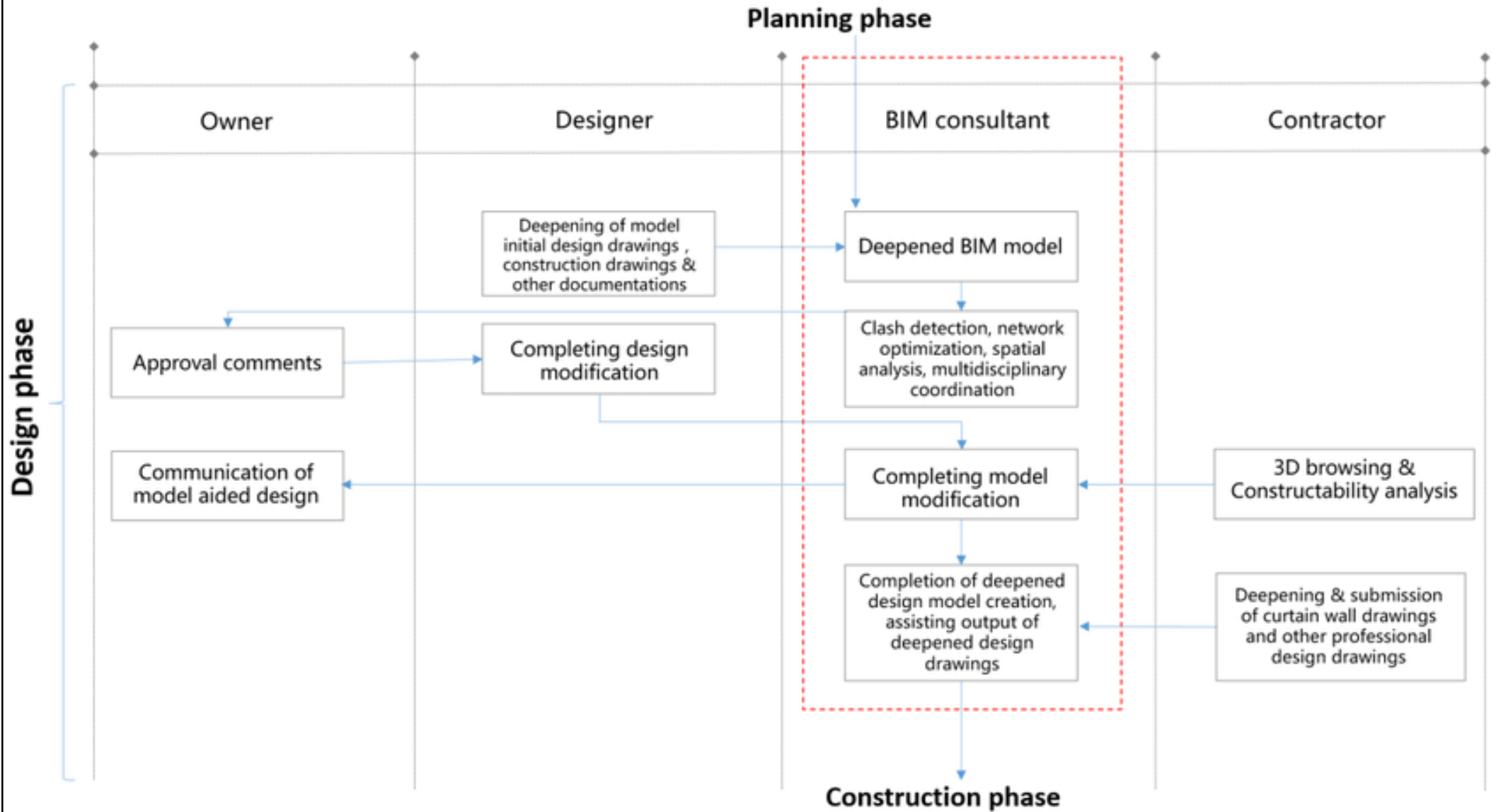
- Model-based collaboration (cont'd)
 - To safeguard the integrity and consistency of the entire model, the technical models must be checked at regular intervals by the BIM manager in a coordination environment
 - The organization and management of digital information and associated processes is the principle task during the entire BIM-based construction project, under a Common Data Environment (CDE)

Design coordination in BIM

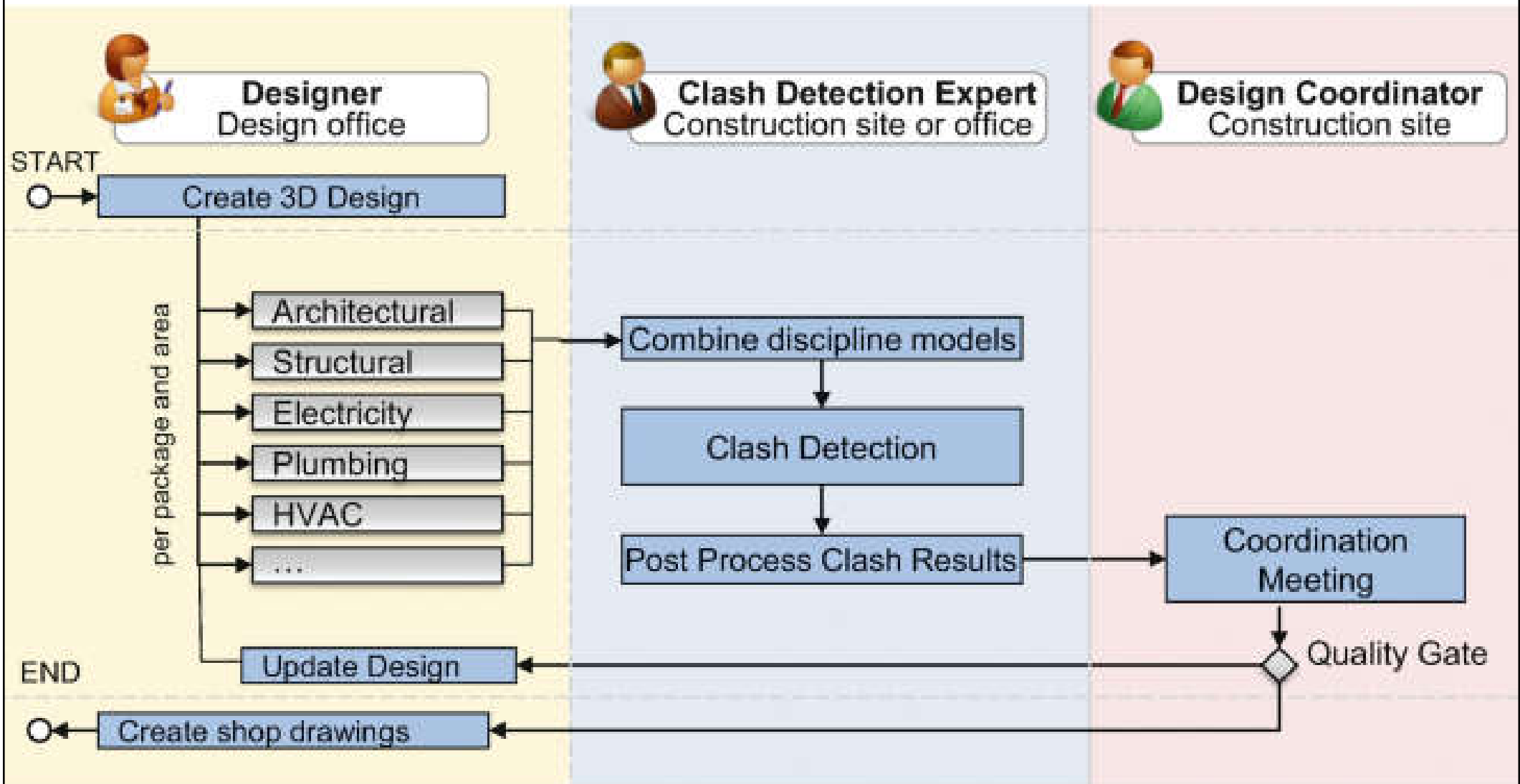
Design Coordination Guide



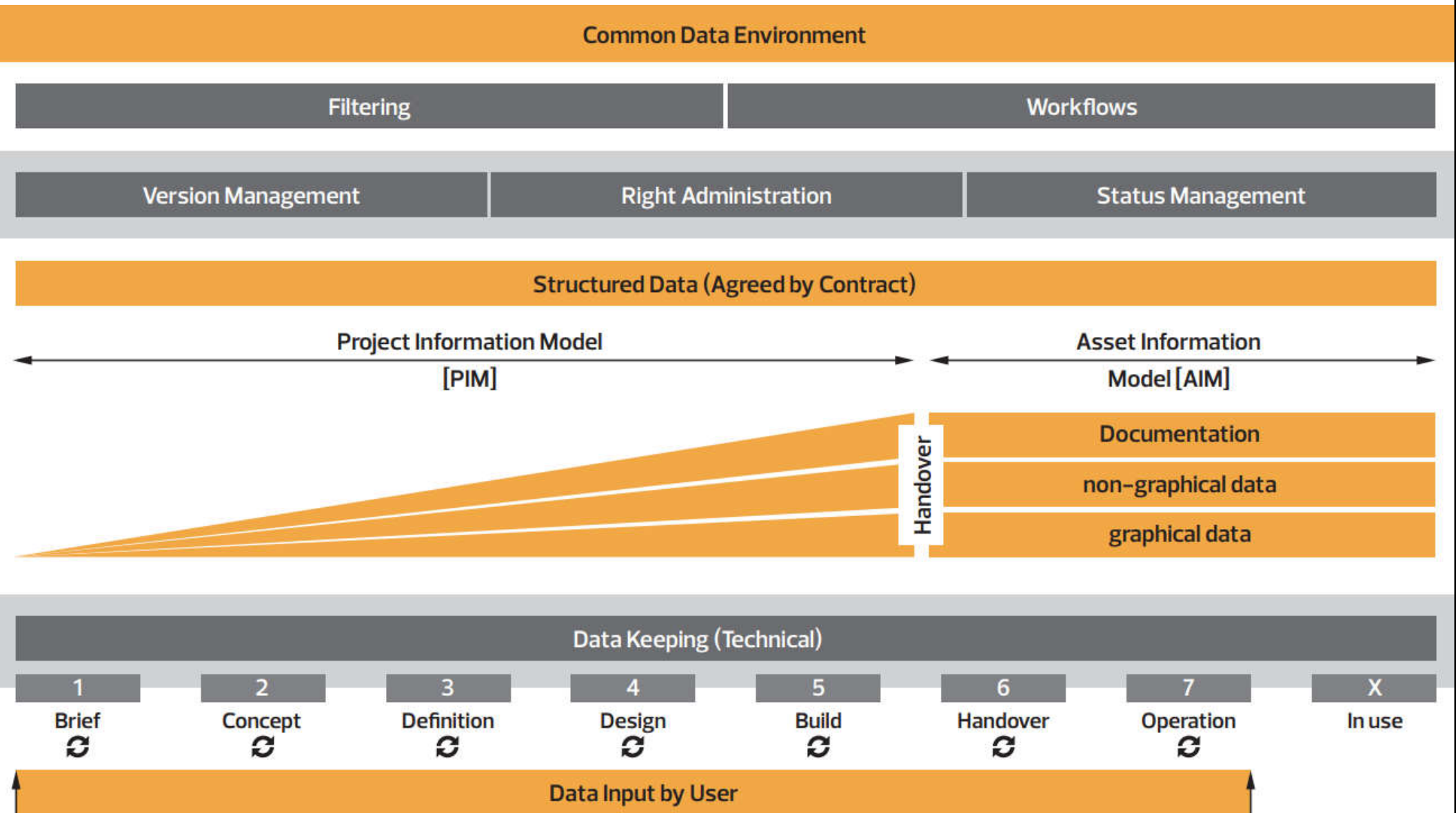
BIM-based design coordination system



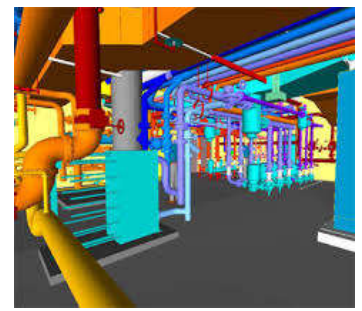
BIM-based design coordination process



Example of Common Data Environment (CDE)



BIM-based coordination



- Common Data Environment (CDE)
 - An information management strategy generally using a piece of software or a paper process
 - Create a single source of truth (SSOT) for any given project (or asset)
 - To collect manage and disseminate all relevant approved project documents for multi-disciplinary design teams members (architects, engineers, MEP) in a managed process

BIM-based coordination



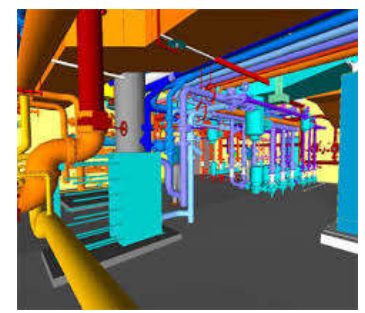
- Common Data Environment (CDE) (cont'd)

- The centralization of the stored data within the CDE reduces the risk of redundancies and simultaneously ensure that all data is up-to-date
- The CDE results in a higher reuse rate, simplifies the aggregation of model information and at the same time serves as the central platform for archiving and documentation

(See also: Common data environment CDE https://www.designingbuildings.co.uk/wiki/Common_data_environment_CDE)

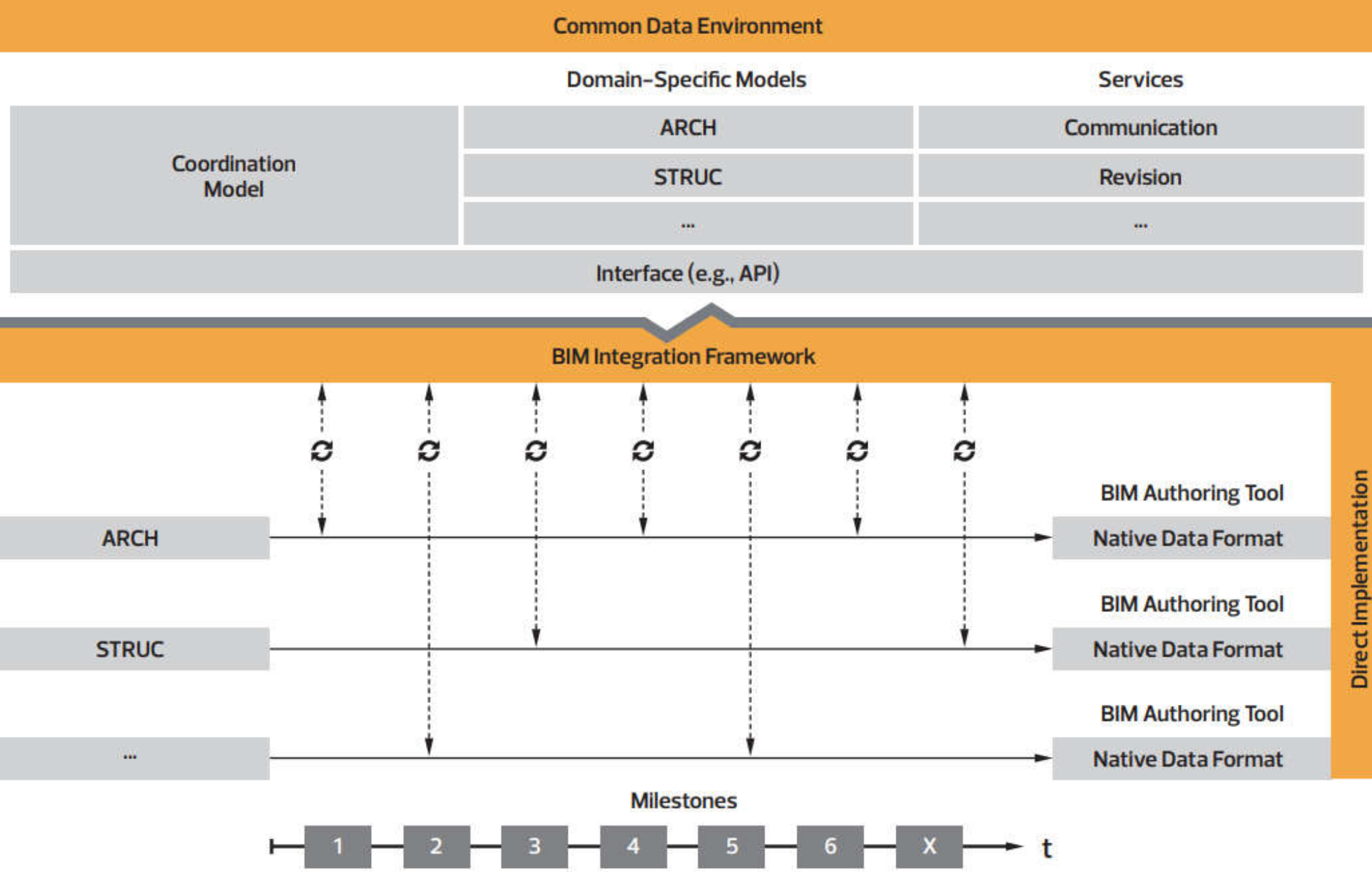
(Source: https://info.allplan.com/hubfs/07_Guides/Whitepaper_BIM_Integration_Framework_EN.pdf)

BIM-based coordination



- BIM Integration Framework (BIF)
 - It represents a software concept which can establish the link from any BIM tool to a CDE
 - Provide seamless integration of access
 - BIF assembles all functions of the interface
 - Functions are simultaneously standardized regardless of the BIM tool used, in order to enable smooth collaboration (e.g. information exchange, process management or communication)

Collaboration processes based on the BIM Integration Framework

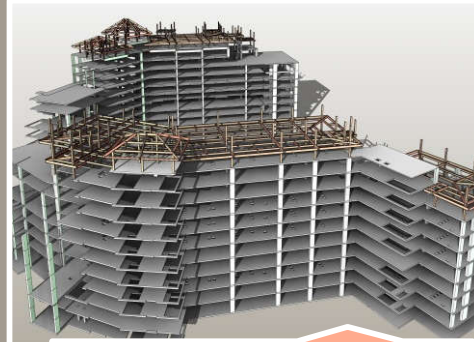


(Source: [https://info.allplan.com/hubfs/07_Guides/Whitepaper BIM Integration Framework EN.pdf](https://info.allplan.com/hubfs/07_Guides/Whitepaper_BIM_Integration_Framework_EN.pdf))

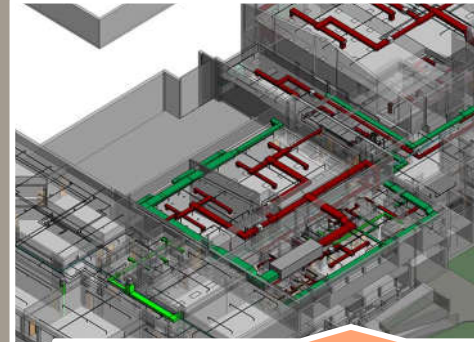
Examples of BIM use in building, construction and infrastructure



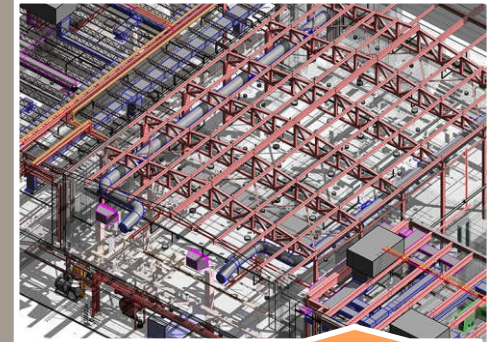
Architectural



Structural



MEP



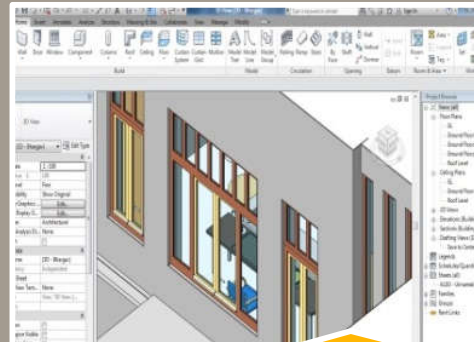
Co-ordination

Wall Schedule					
Wall Us	Function	Acoustic Rating	Fire Rating	Compartmentation	Area
aring	Exterior			<input checked="" type="checkbox"/>	16346
aring	Exterior			<input checked="" type="checkbox"/>	128854
aring	Exterior	40	E160	<input checked="" type="checkbox"/>	11044
aring	Interior	40	E160	<input checked="" type="checkbox"/>	20879
aring	Interior	40	E160	<input checked="" type="checkbox"/>	106001
aring	Interior	40	E160	<input checked="" type="checkbox"/>	21729
aring	Interior	40		<input checked="" type="checkbox"/>	8631
aring	Exterior			<input checked="" type="checkbox"/>	841
aring	Interior			<input checked="" type="checkbox"/>	17520
aring	Interior	40	E160	<input checked="" type="checkbox"/>	33148
aring	Interior	40	E160	<input checked="" type="checkbox"/>	20674
					385871
aring	Exterior			<input checked="" type="checkbox"/>	15079
aring	Exterior			<input checked="" type="checkbox"/>	777

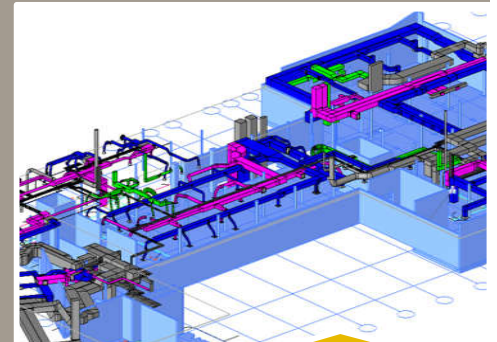
Scheduling



Clash Detection

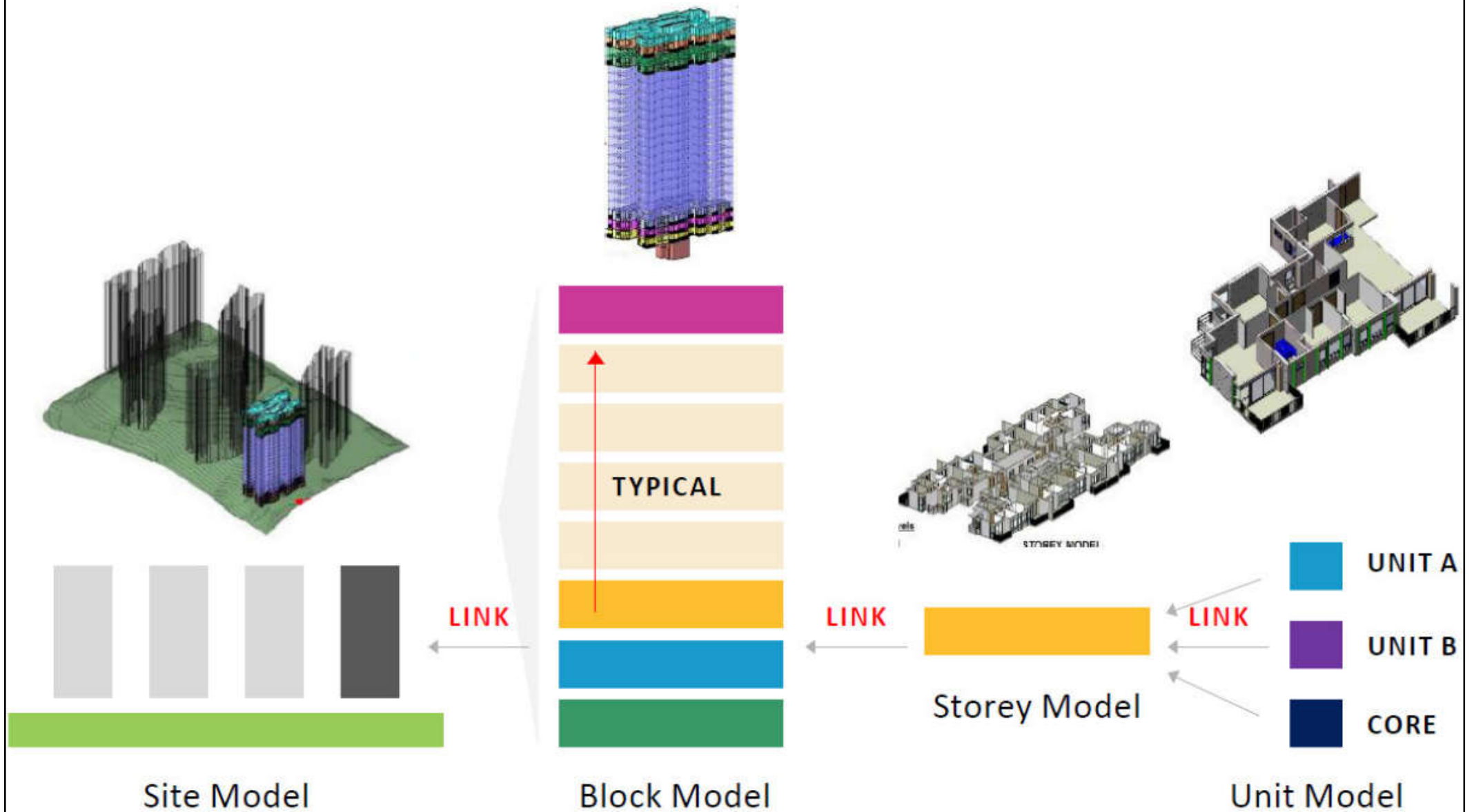


Family Creation

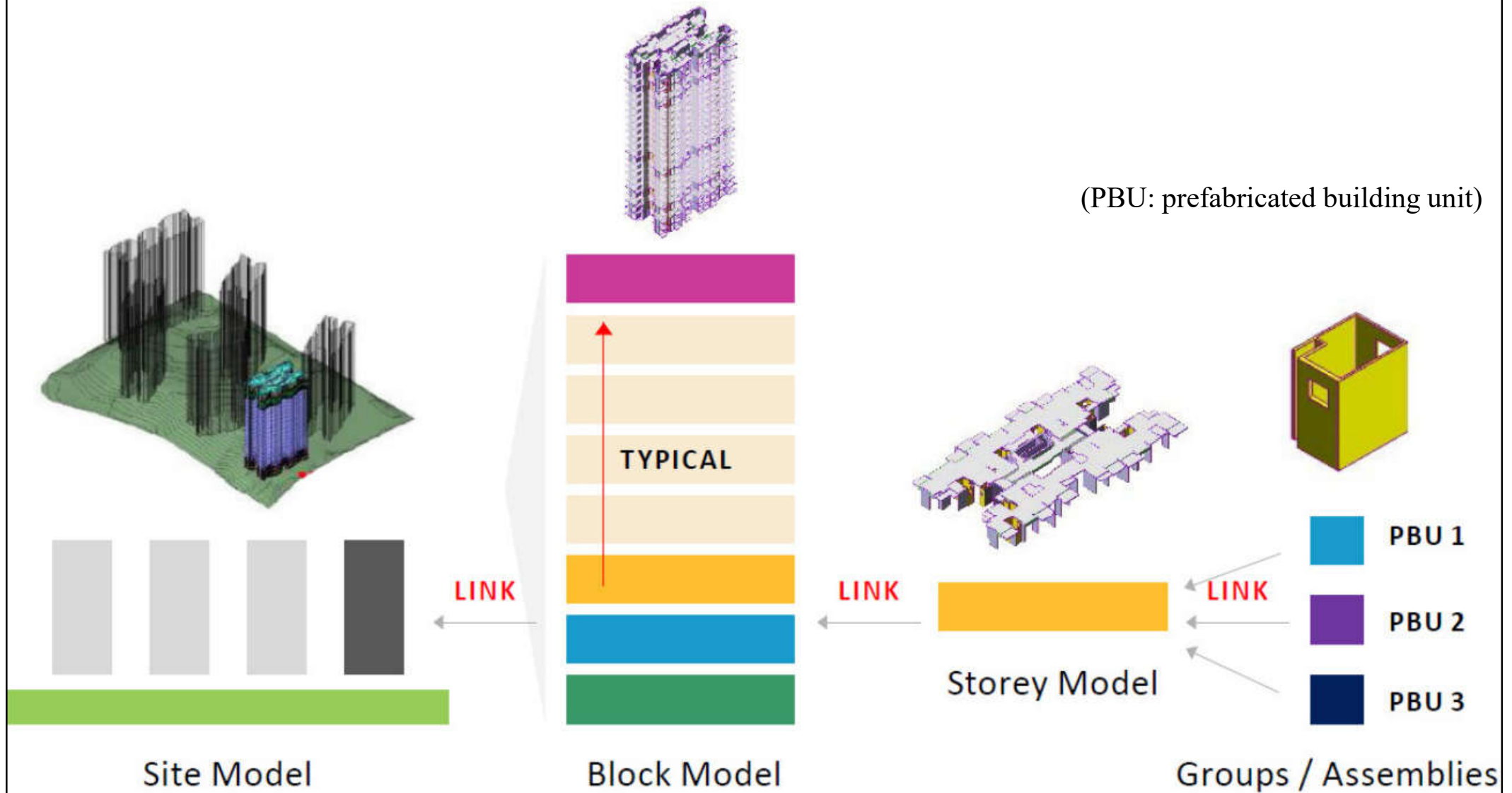


BIM Co-ordination Model

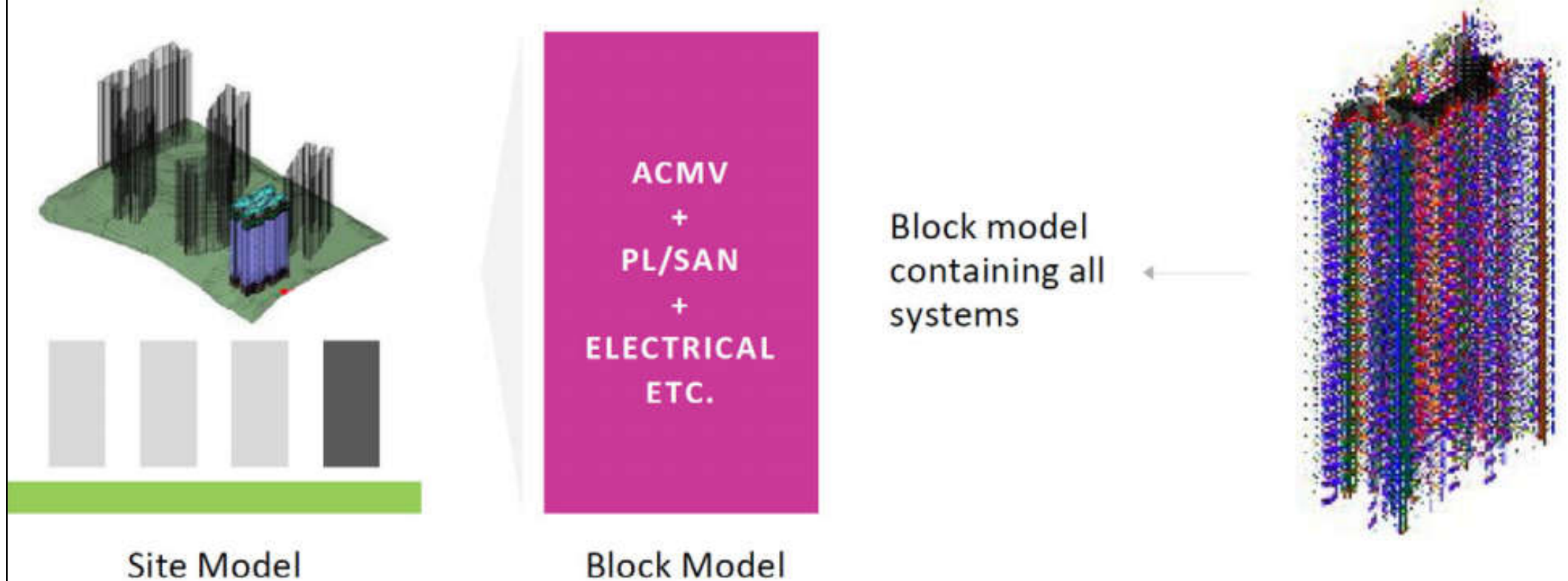
A sample model and linking structure for the Architectural discipline



A sample model and linking structure for the Structural discipline



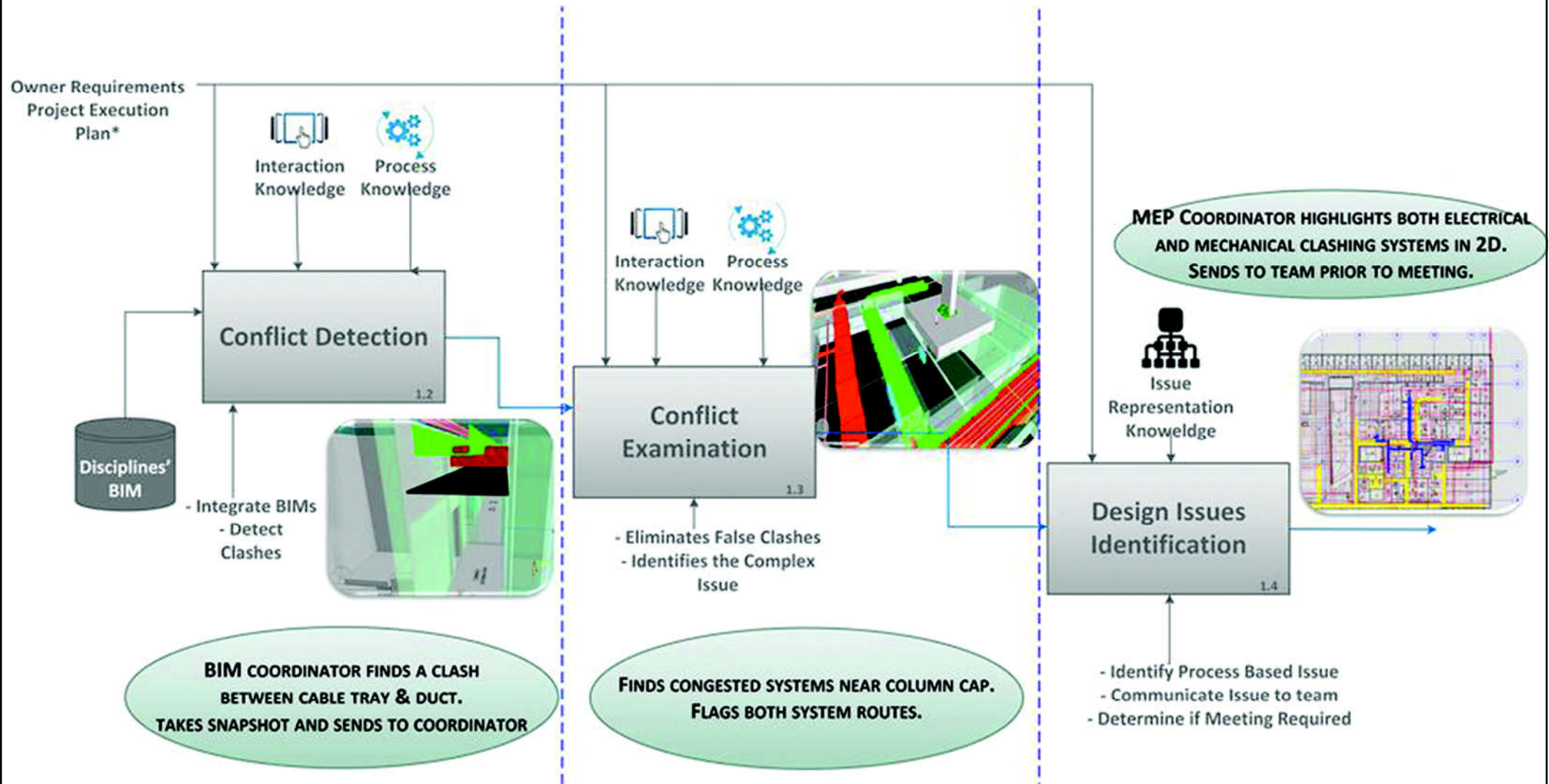
A sample model for the MEP (Building Services) discipline



All systems within one zone/block as one file.
Depending on model size, one system of one zone/block in one file (This makes it easier to handover files to different MEP subcontractors for their further development and use), where each system may be further split up into floors if needed.

(ACMV: air-conditioning & mechanical ventilation; PL/SAN: plumbing/sanitation)

Example of BIM-based building MEP design coordination



Typical coordination issues that are critical to construction

<p>Architectural – Structural Coordination</p> <ul style="list-style-type: none">• Column setting out and alignment between Architectural and Structural models• Ceiling to structural framing coordination• Staircase and ramp coordination	<p>Structural – MEP Coordination</p> <ul style="list-style-type: none">• Critical penetrations especially of large pipes and MEP services into structural framing• MEP openings into structural walls• Underground MEP services to structural foundation
<p>Architectural – MEP Coordination</p> <ul style="list-style-type: none">• Service shaft coordination• Ceiling to concealed MEP services coordination	<p>Arch-Structure-MEP</p> <ul style="list-style-type: none">• Toilet setting out, including coordination of tile layout, floor drains, and fixtures• Façade coordination

Main responsibilities of the **BIM co-ordinator**

- Developing and maintaining the project's BIM Protocol
- Following the mandated BIM collaboration format (BCF)
- Co-ordinating stakeholders in terms of their role within the BIM process
- Ensuring the accuracy of models and datasets by establishing quality control procedures
- Using clash detection software to identify clashes
- Where there are shared data and inter-model relationships, e.g. shared project coordinates, floor levels, etc., making sure these are recorded and monitored
- Co-ordinating data modelling and management
- Liaising with the design team and client

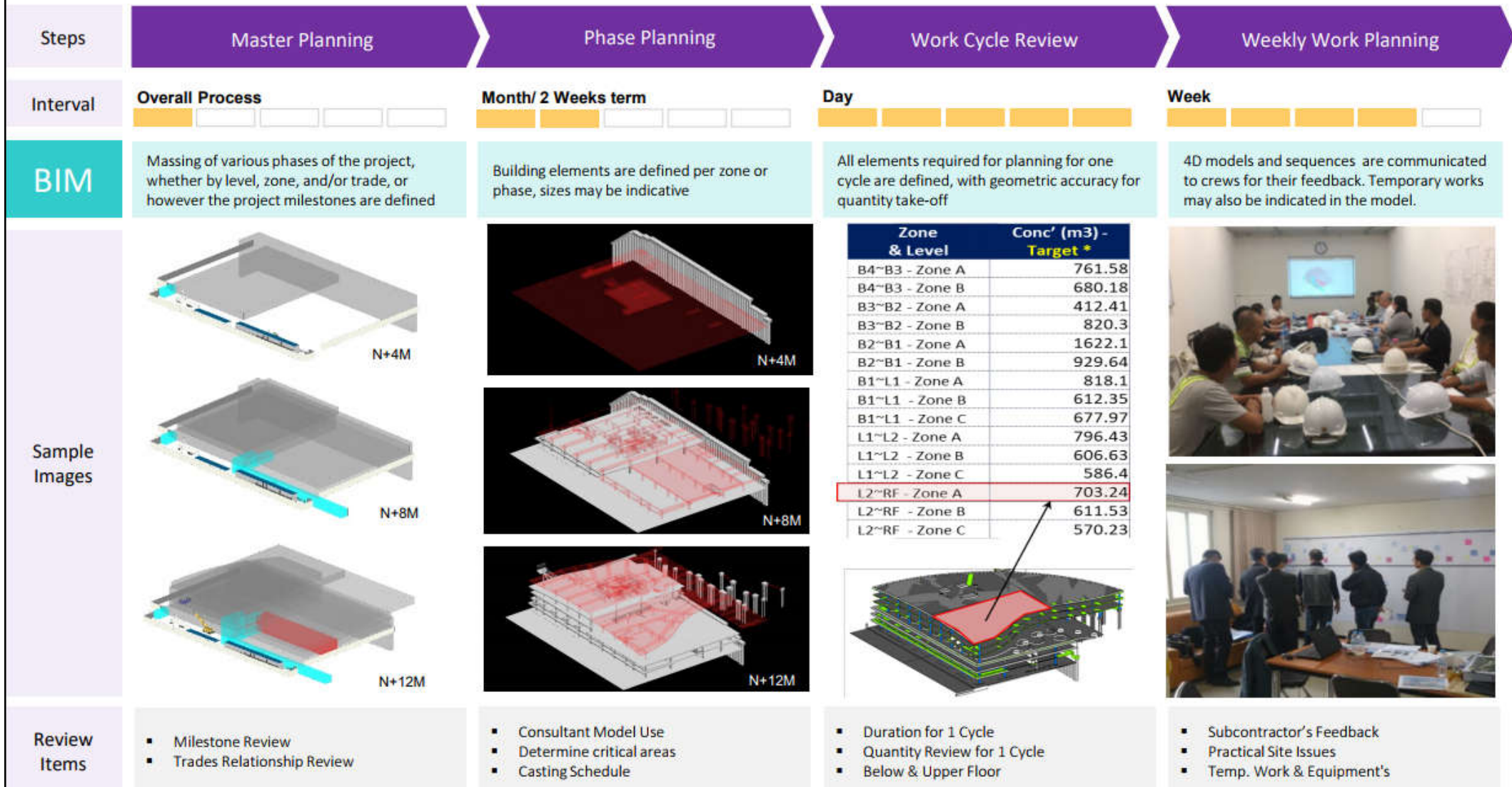
BIM coordination tasks:

- Clash detection & resolution
- Interactive walk-through & fly-by animations
- Virtual mock-up & review

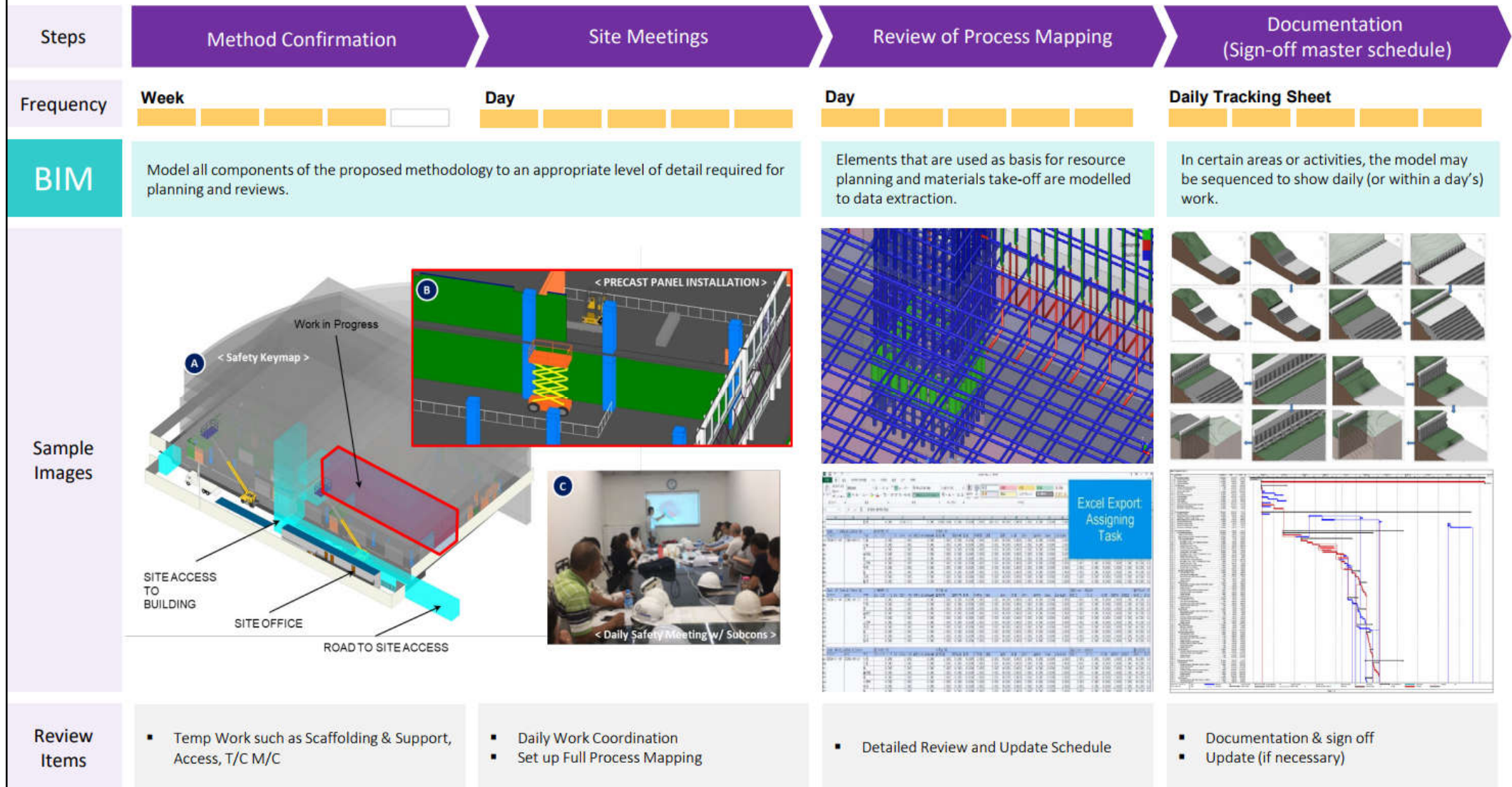
BIM software list for BIM Coordinators



Integration of BIM & production planning / scheduling: From master planning to weekly work planning



Integration of BIM & production planning / scheduling: Weekly and daily coordination, review and tracking

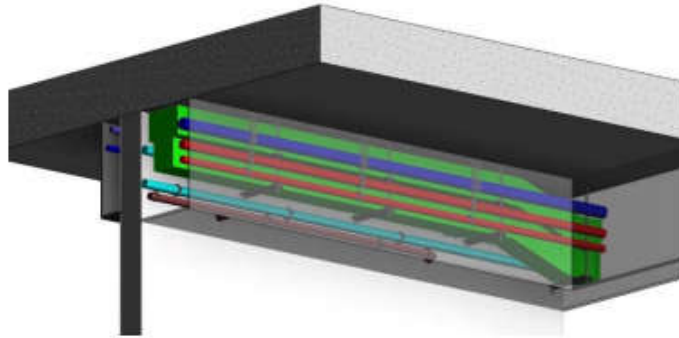


An example of coordination matrix

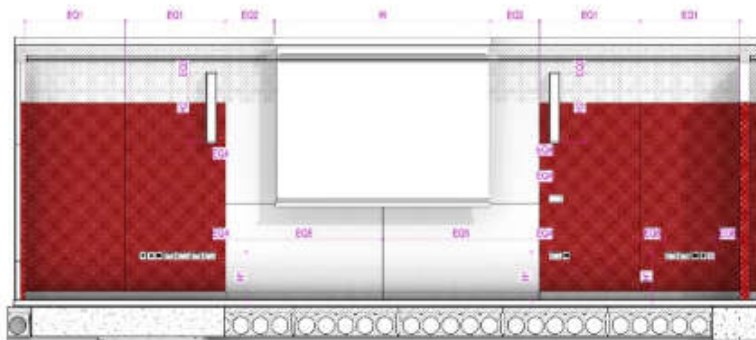
	ARCHITECTURAL					STRUCTURAL					MEP									
	Ceiling	Rated Walls	Floors	Casework	Furnishings	Structural Foundation	Structural Column	Structural Framing	Structural Wall	Slab	Steel & Pre-Cast	Mechanical Ductwork	Mechanical Piping	Mechanical Equipment	Mechanical Fixtures	Plumbing Piping	Electrical Equipment	Electrical Fixtures & Devices	All equipment with clearances	Specialty Equipment
Mechanical Ductwork	1	2					3	3	3	3	3									
Mechanical Piping	1	2					3	3	3	3	3									
Mechanical Equipment												13								
Mechanical Fixtures												13								
Plumbing Piping																				
Electrical Equipment											10	11	11	6	6	12				
Electrical Fixtures & Devices				7	8						10	11	11	6	6	12				
All equipment with clearances		4					5	5	5		5									
Specialty Equipment											9									

Sample virtual review coordination

Sample Virtual Review Coordination Issues



Coordination of MEP services inside of residential unit ceiling bulkhead



Coordination of M&E outlets, projects, whiteboard, and speakers with wall paneling alignment



-On 21 Nov 2016, PTA requested to switch for bath 1 to shift together with switch for master bedroom. CCDC to check.

-On 28 Nov 2016, CCDC informed that switch can be shifted, but the change will have abortive work, need to chase groove on PBU wall to the new locatopn. PTA will check and revert back.



- On 14 Nov 2016, PTA commented, Ceiling at master bedroom as per HPK-Archi-RFI-151, to be added.



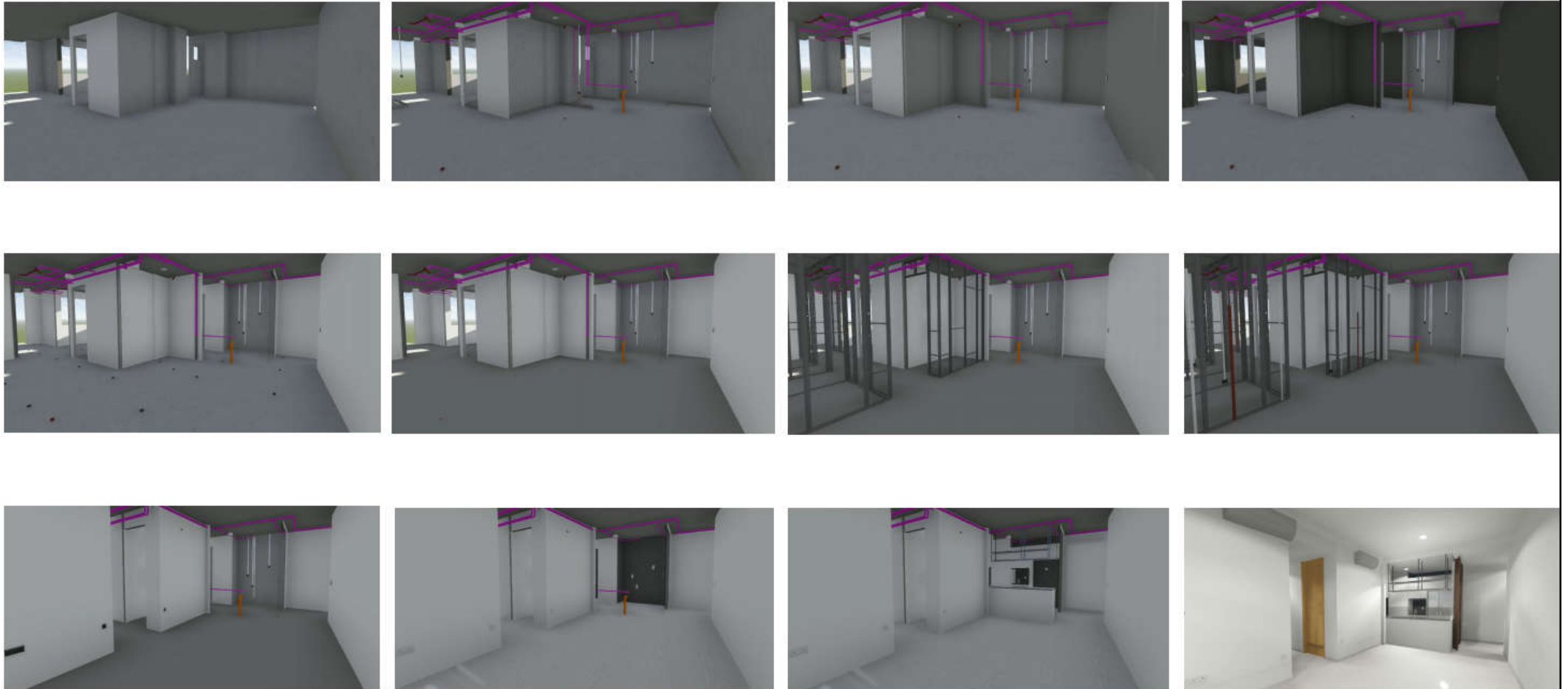
- On 14 Nov 2016, PTA commented, power socket at balcony to be adjusted to 450mm height



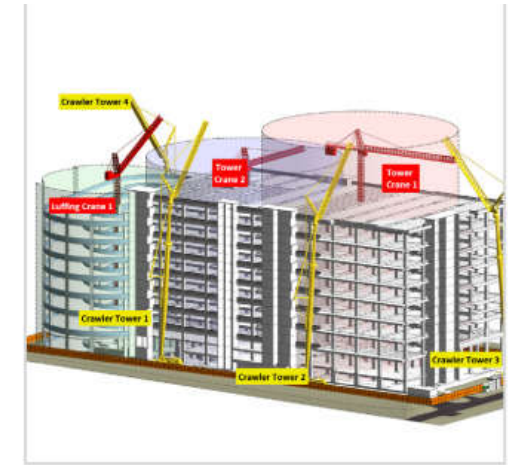
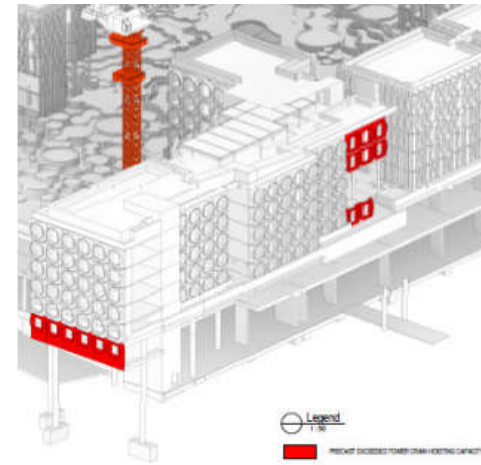
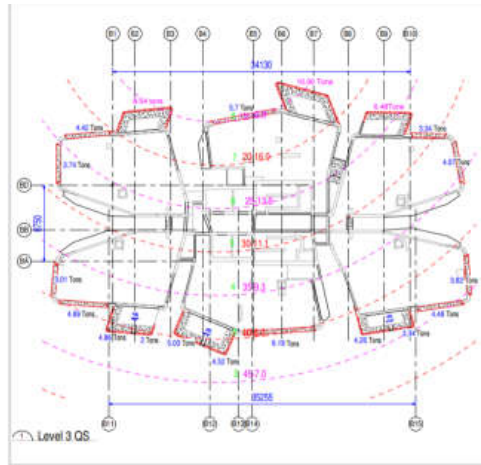
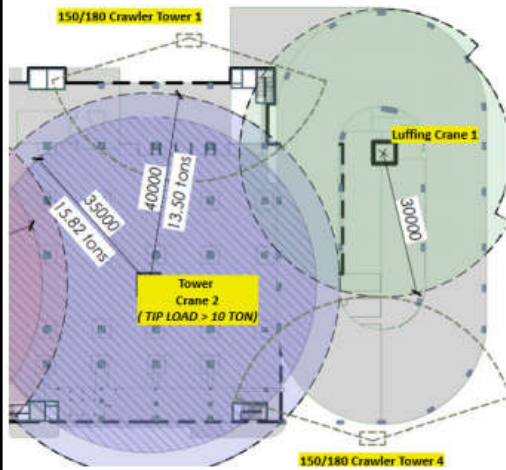
- On 14 Nov 2016, Developer & PTA commented, the termination between laminate floor & kitchen floor tile at bedroom 4 should use laminated end cap.
-On 21 Nov 2016, PTA commented, tiling shirling to be extended to wrap wardrobe dry wall to make.
-On 28 Nov 2016, PTA commented whether can use smaller end cap. And CCDC confirmed in the meeting that 20mm is smallest size after clarification with Weavepact



Sample virtual sequencing for residential unit mock-up



Crane capacity planning



STEP 1

Model in Tower Cranes / crane to exact planned location

- Build in reach radii into object

STEP 2

Identify and prep all items to be hoisted in the model

- Modelled to exact location
- Modelled to exact overall size, dimensions, details as per fabrication
- Apply formula or scripting to calculate weight from each object OR manually key in

STEP 3

MANUAL METHOD:

- Tag weight for each items so that this annotation shows up in the model
- Visually check if every component weight is within load capacity for that reach radius

AUTOMATIC METHOD:

- Apply scripting to auto-detect and highlight items that are over weight

STEP 4

Adjust tower crane plan (add in more tower cranes) until all items (esp. heaviest or critical items) are within hoisting weight and reach