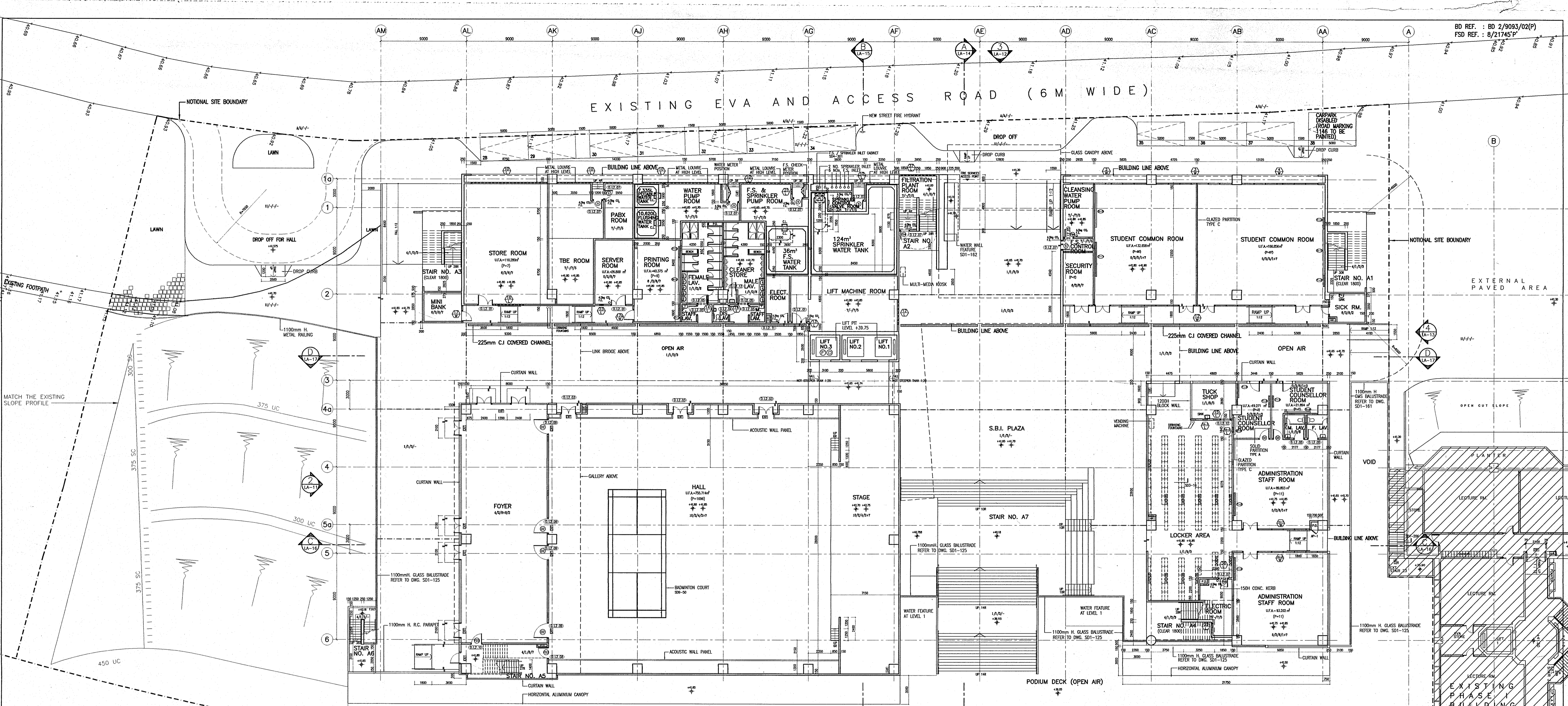
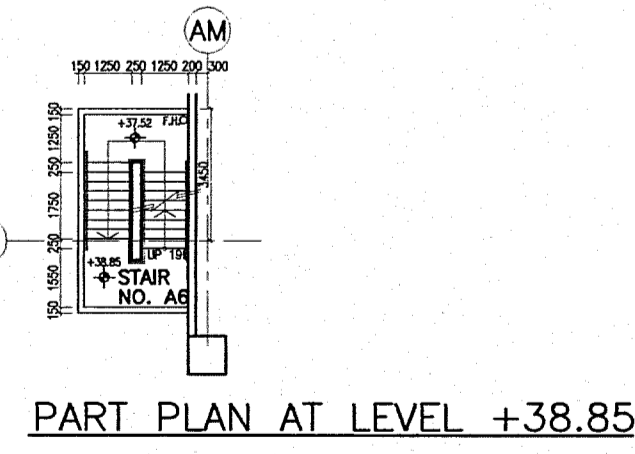


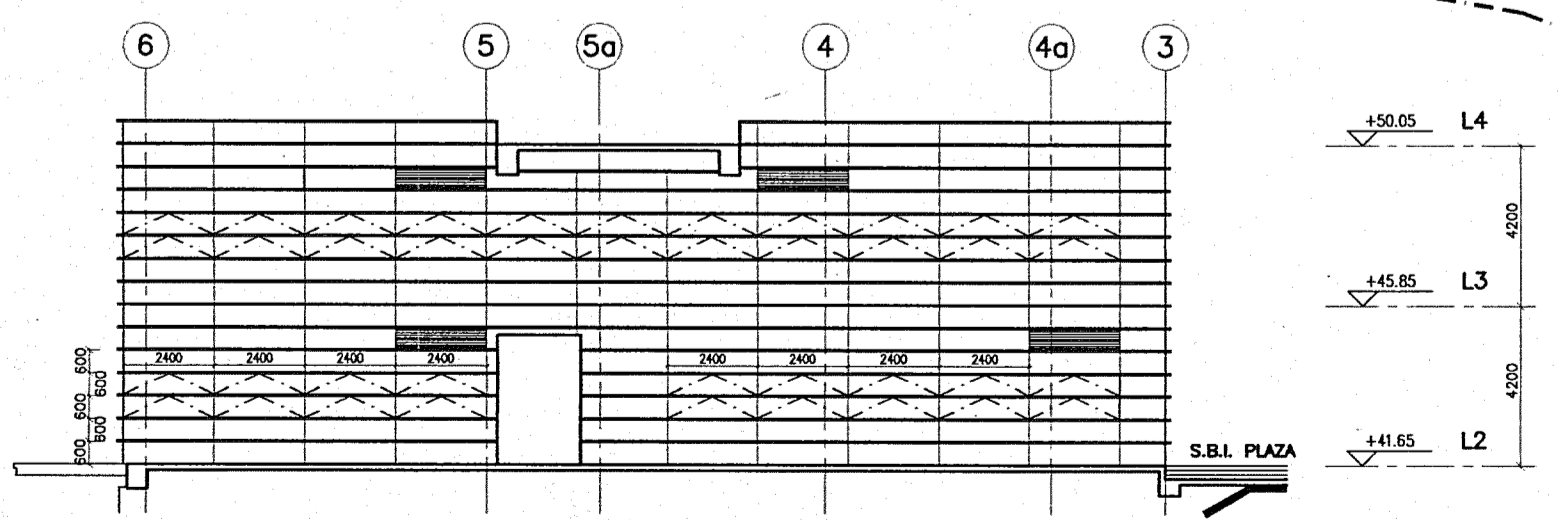
EXISTING EVA AND ACCESS ROAD (6M WIDE)



LEVEL 2 PLAN
CAPACITY = 1924(P)



PART PLAN AT LEVEL +38.85



U.F.A. OF ADMINISTRATION STAFF ROOM (L3 - AT GRID A-C2/A3)	U.F.A. OF ADMINISTRATION STAFF ROOM (L2 - AT GRID A-S/A4)	U.F.A. OF ADMINISTRATION STAFF ROOM (L2 - AT GRID S/A4)
8.85 x 8.50 x 7.15 = 539.77 M ²	8.85 x 8.50 x 8.50 = 650.00 M ²	8.85 x 8.50 x 8.50 = 650.00 M ²
WINDOW AREA REQUIRED: 309.767 x 170 = 52.67 M ²	59.803 x 170 = 10.17 M ²	59.803 x 170 = 10.17 M ²
OPENABLE WINDOW AREA REQUIRED: 309.767 x 176 = 54.54 M ²	59.803 x 176 = 10.53 M ²	59.803 x 176 = 10.53 M ²
WINDOW AREA PROVIDED (L3-17 SECTION D-D): 12 x 2.400 x 2.400 x 85% = 58.75 M ²	4 x 2.400 x 2.400 x 85% = 19.54 M ²	4 x 2.400 x 2.400 x 85% = 19.54 M ²
OPENABLE WINDOW AREA PROVIDED (L3-17 SECTION D-D): 12 x 2.400 x 1.200 x 85% = 29.38 M ²	4 x 2.400 x 1.200 x 85% = 9.77 M ²	4 x 2.400 x 1.200 x 85% = 9.77 M ²

NO.	DATE	AMENDMENT
K	12-12-03	TUCK SHOP REVISED & LOCKER AREA REVISED (C.LA-009)
J	20-08-03	WALL MOVED AT GRID AG, WATER TANK REVISED, RAMP REVISED & SICK ROOM REVISED
I	11-08-03	WATER FEATURE WALL REVISED; LOUVER MARK ADDED; LOUVER & DOOR MARK DELETED; (C.LA-007)
H	23-07-03	FILTRATION PLANT ROOM REVISED & FEMALE & MALE LAV. REVISED (C1-A-005)
G	17-07-03	CMS BALUSTRADE ADDED & WATER FEATURE & FINISH MARK REVISED
F	07-07-03	LEVEL REVISED & RAMP ADDED
E	30-06-03	GENERAL REVISED
D	13-06-03	TUCK SHOP ADDED; PLANT ROOM REVISED
C	10-06-03	B.D. AMENDMENT
B	14-04-03	GENERAL REVISED
A	28-02-03	B.D. SUBMISSION
	28-01-03	FURNITURE MARKS ADDED, HALL REV. GENERAL REVISED, DOOR & WINDOW

P&T Architects and Engineers Ltd

HONG KONG PALMER & TURNER INTERNATIONAL INC./ P & T (HONG KONG) LTD.
25/F OTB BUILDING, 160 GLOUCESTER ROAD
MACAU: P&T ARCHITECTS & ENGINEERS LTD. MACAU BRANCH
2002-8 CENTRO COMERCIAL DA PRAIA GRANDE
SINGAPORE: P&T CONSULTANTS PTE. LTD
ARCHITECTS-STRUCTURAL & CIVIL ENGINEERS-M&E ENGINEERS
2300 CLIFFORD CENTRE, 24 RAFFLES PLACE, SINGAPORE 0104
INDONESIA: P&T INDONESIA
P.O. BOX 3139/ART, JAKARTA
THAILAND: PALMER & TURNER (THAILAND) LTD
491/10-11, 3/F SILEM PLAZA, SILEM, BANGKOK, BANGKOK
10500 THAILAND
MALAYSIA: PTDM SDN BHD
402, 4/F BANDARAN YANJAN SELANGOR
JALAN BUKIT BERANG, 55100 K.L., MALAYSIA
TAWAN: P&T TAWAN LTD.
14/F, 205 AN HO ROAD, SECTION 2 TAPEI 106
TAWAN, ROC.

ALL DIMENSIONS ARE IN MILLIMETER EXCEPT OTHERWISE NOTED
DO NOT SCALE DRAWING
ALL MEASUREMENTS SHOULD BE VERIFIED ON SITE
THE OWNERSHIP OF THE COPYRIGHT IN THIS DRAWING IS RETAINED BY P&T ARCHITECTS AND ENGINEERS LTD UNLESS CONSENT MUST BE OBTAINED BEFORE ANY USE OR REPRODUCTION OF THE DRAWING OR ANY PART THEREOF CAN BE MADE.

PRIORITY STATUS

PROJECT	DESCRIPTION
SCHOOL OF BUSINESS AND INFORMATION SYSTEMS FOR VOCATIONAL TRAINING COUNCIL AT T.Y.T. LOT 123 IN AREA 23, TSING YI	

DRAWING	
FLOOR PLAN OF LEVEL 2	
SCALE 1:200	NUMBER 3562
DATE OCT 2002	LA-04
DRAWN	H I J K L M
DESIGNED	CHECKED APPROVED