

SBS5224 Engineering Management

<http://ibse.hk/SBS5224/>

Typical organizational structures for contractors and consultants in Hong Kong

Source: Tang, S. L., et al., 2003. *Modern Construction Project Management*, 2nd ed., Hong Kong University Press, Hong Kong. (Chapter 1 Principles of Organizational Structures)

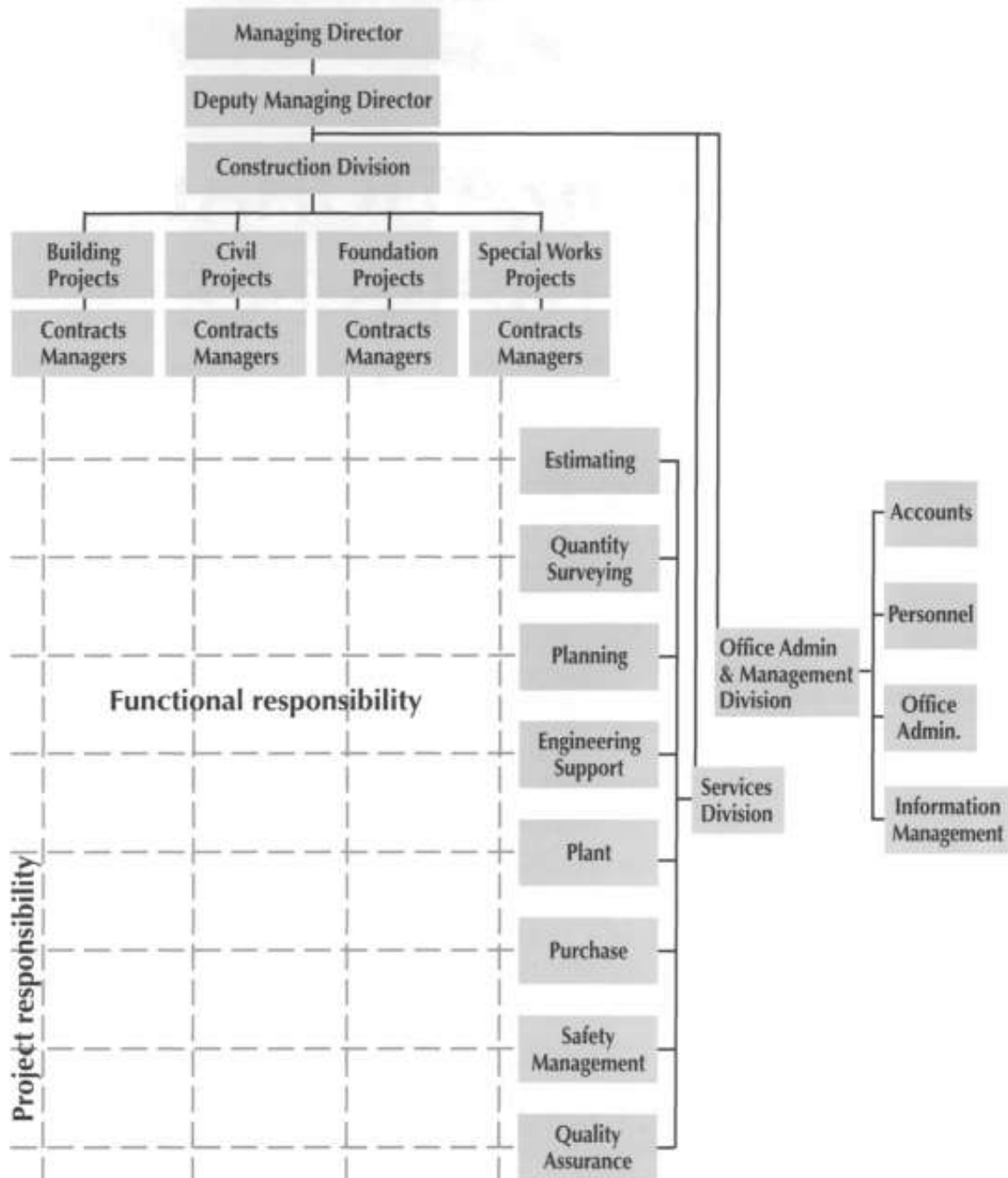


Fig. 2.1 A typical large contractor's head office organization.

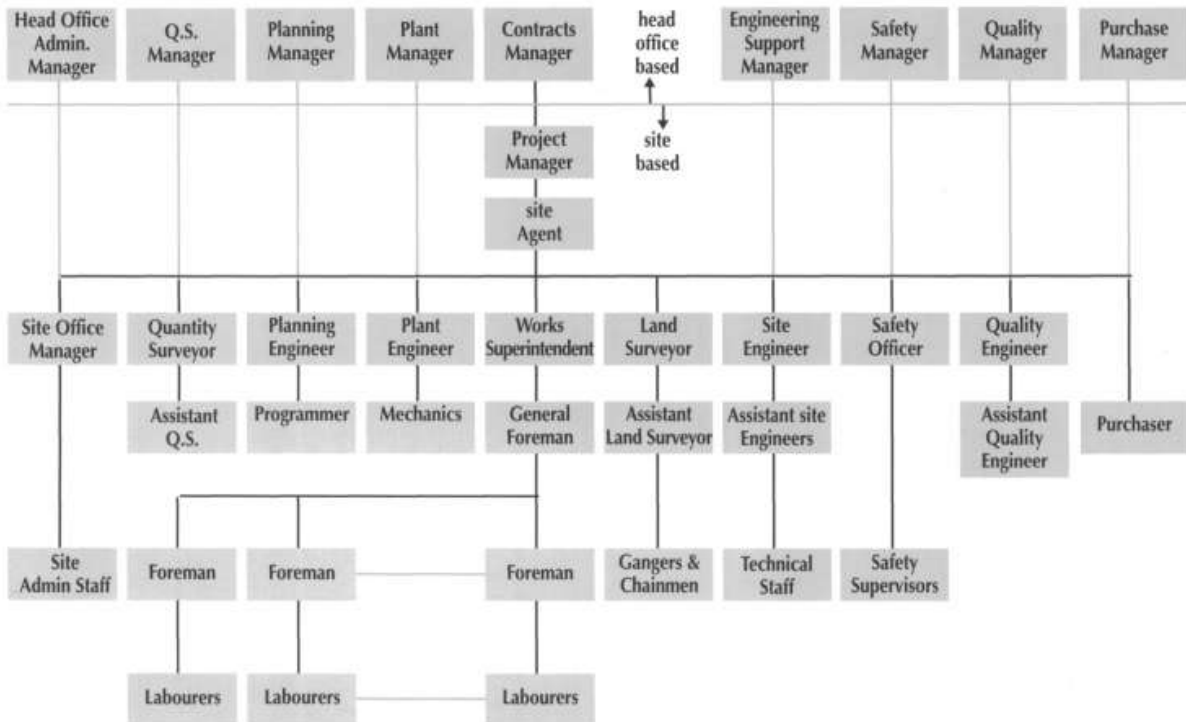


Fig. 2.2 A typical contractor's organization on a large site.

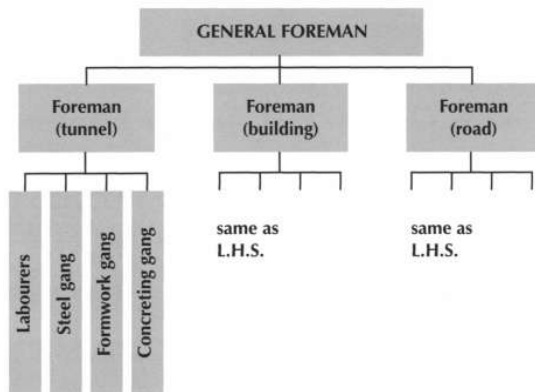


Fig. 1.1 Example of a project organization.

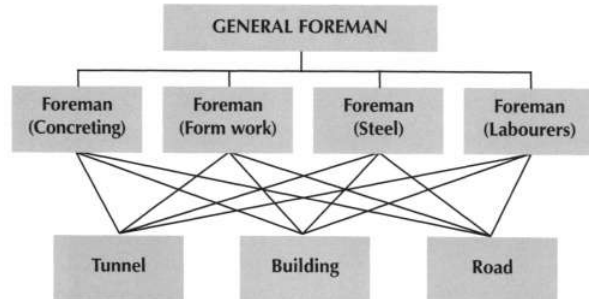


Fig. 1.2 Example of a functional organization.

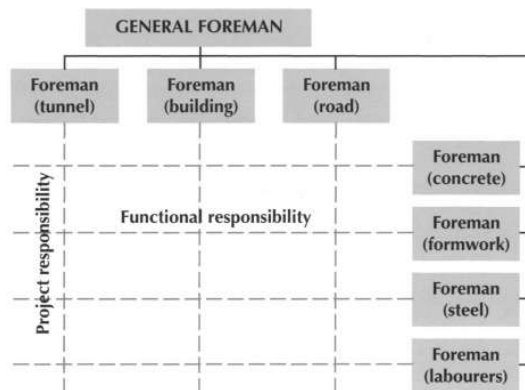


Fig. 1.5 A typical matrix organization.

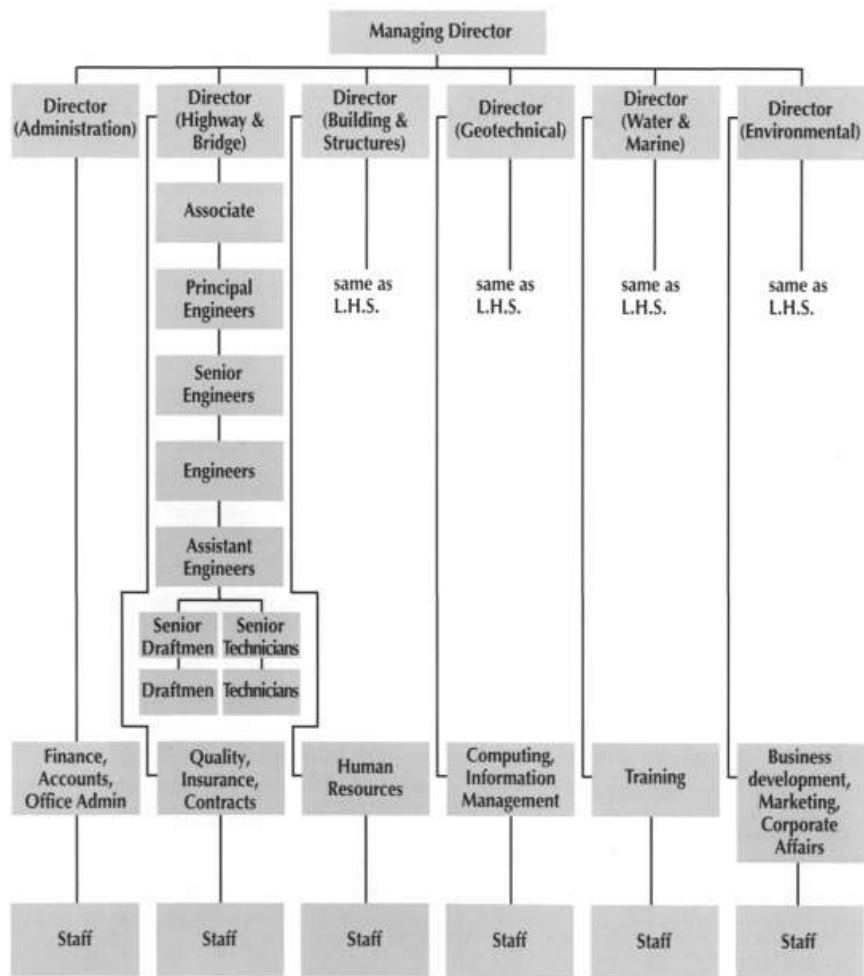


Fig. 2.3 A typical large consulting firm's head office organization.

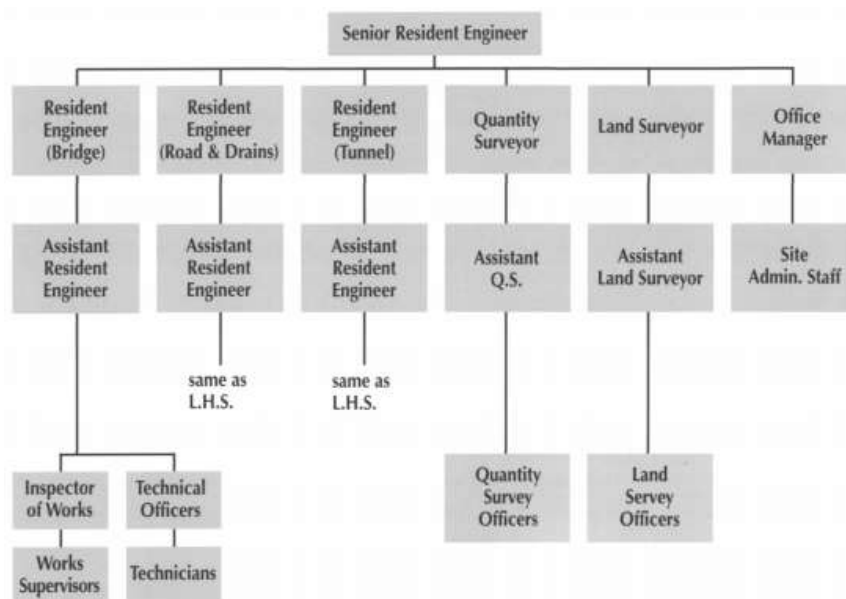


Fig. 2.4 A typical resident engineer's organization structure.